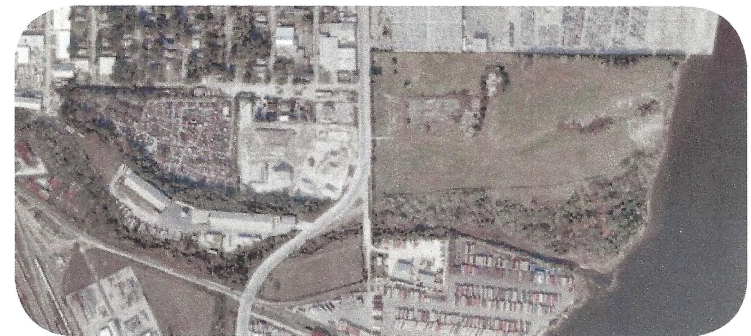


Action Items for Sub-principle 2.5:

1. Prioritize brownfield sites for redevelopment based on extent of contamination and remediation efforts and potential for redevelopment.
2. Develop a strategy to access federal and state funding for brownfield sites.
3. Create redevelopment plans for sites based on available funding sources.
4. A 40-acre parcel of land on the St. Johns River which connects to a small tributary of the river can be redeveloped as a park to provide public access to the water and additional recreation space. Residual land may be used to house alternative energy sources like solar panels.



Photos (above and right) of existing brownfield adjacent the St. Johns River



Illustration: The graphic above illustrates the potential of utilizing a brownfield site as a park and solar farm. (Source: Zyscovich Architects, 2009)