

Protecting Florida's Water

An overview of the St. Johns River Water Management District

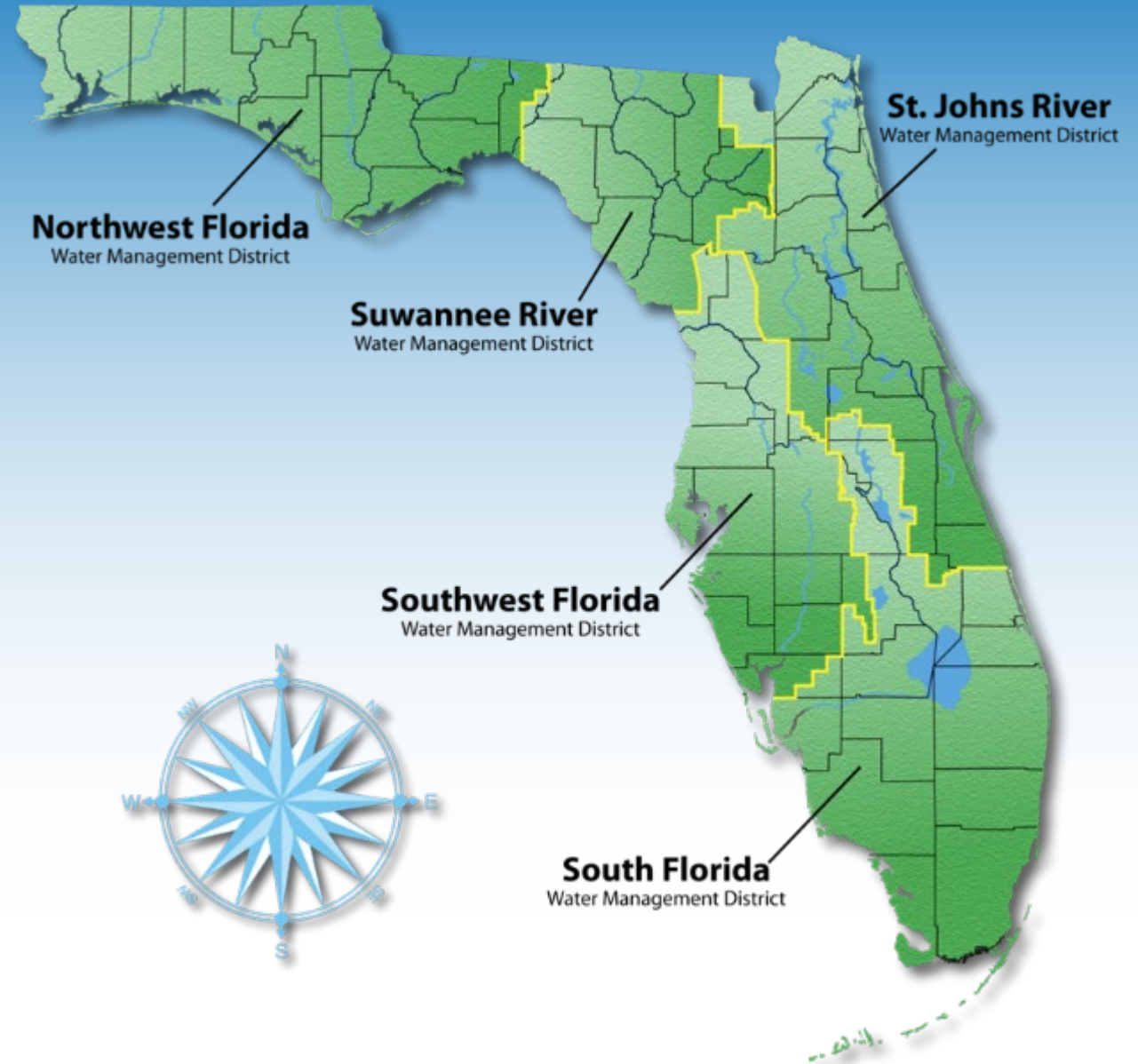
Cori Hermle, Strategic Planning Basin Coordinator
Bureau of Basin Management and Project Development



St. Johns River
Water Management District

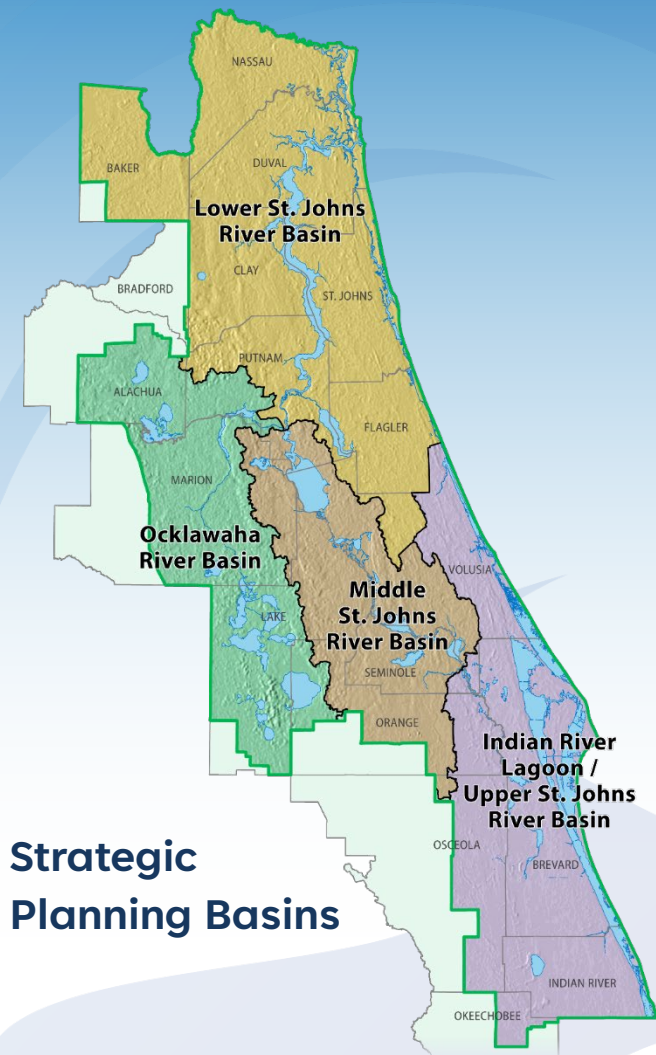
Who We Are

- 12,283 square miles
- Covers all or part of 18 counties in northeast and east-central Florida
- St. Johns River is 310 miles long from its headwaters in Indian River County (the longest river in Florida)

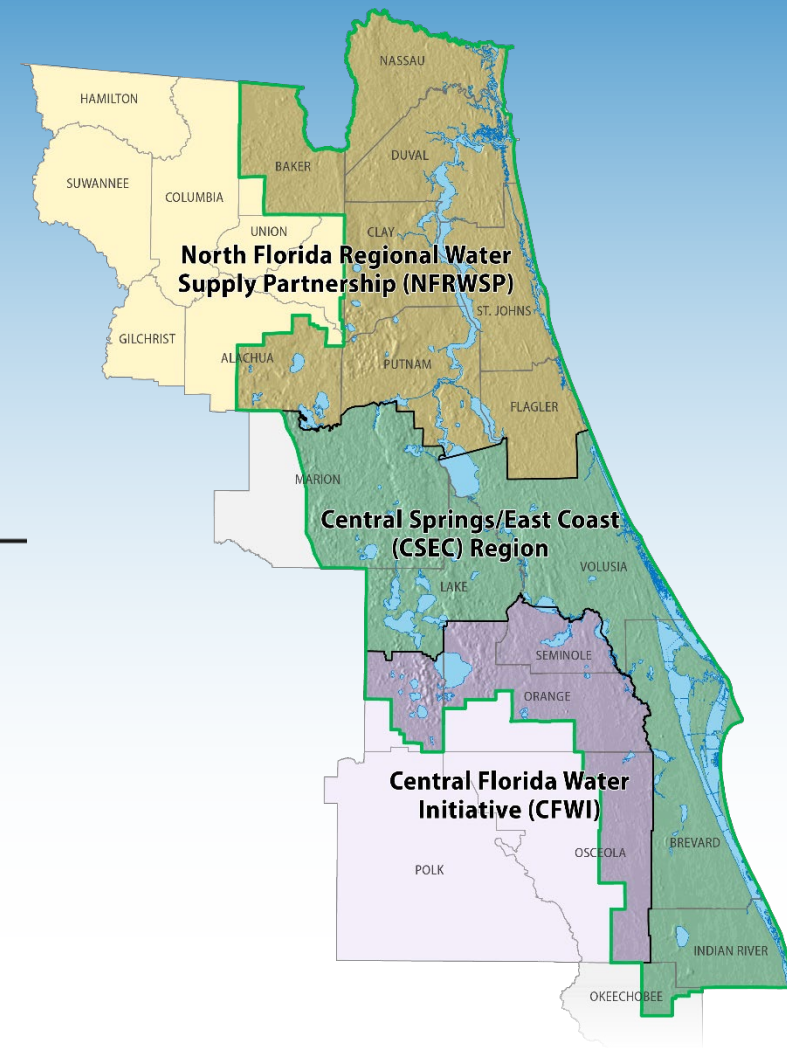
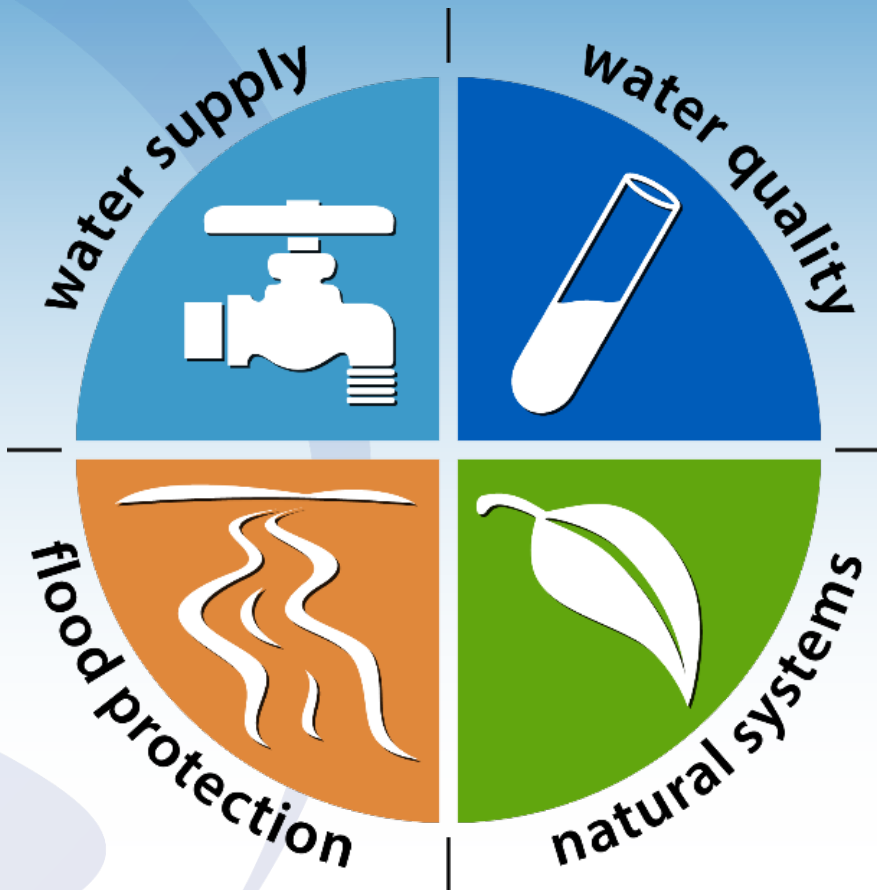


St. Johns River
Water Management District

Resource Focused Organization



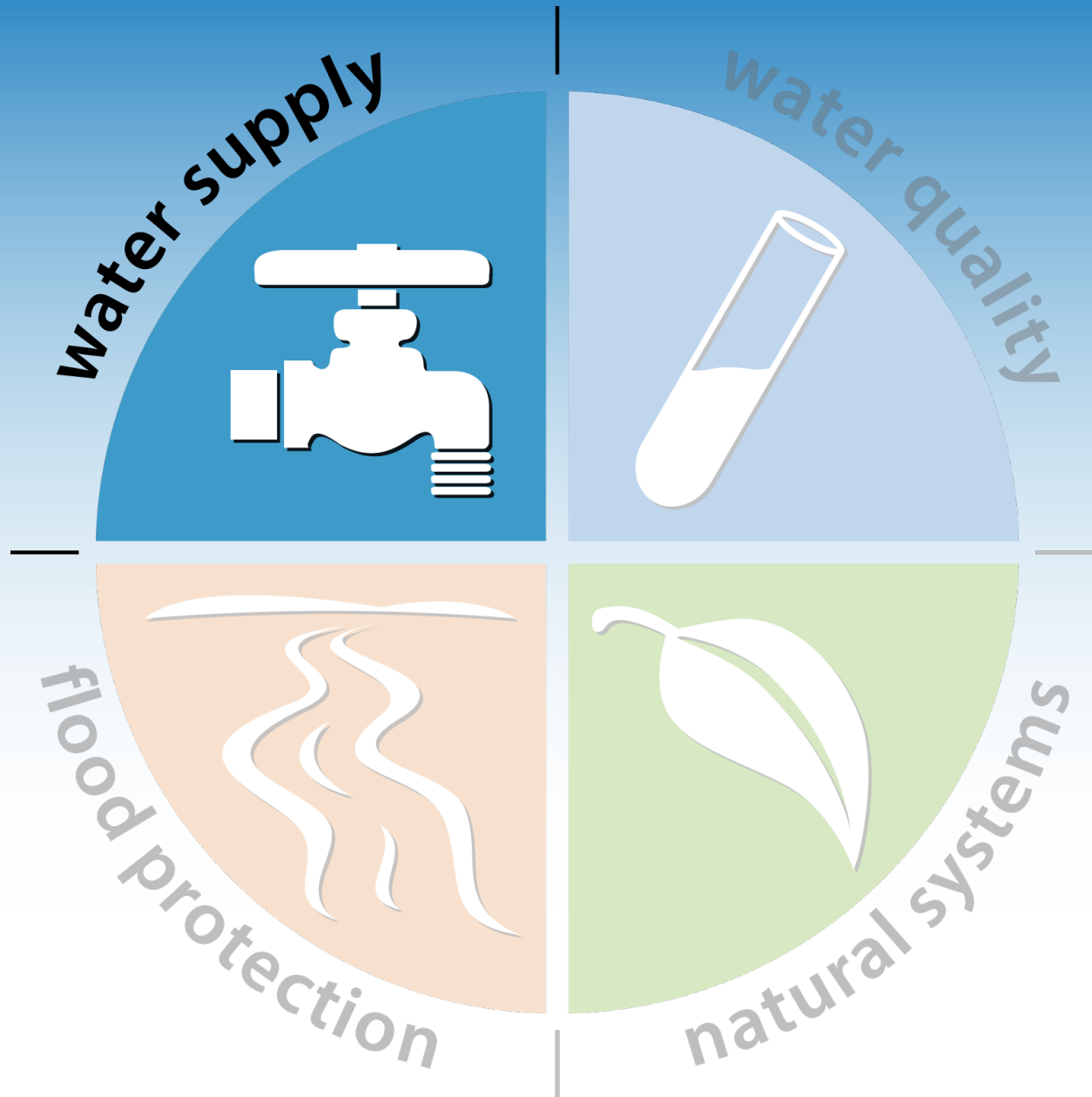
Strategic
Planning Basins



Water Supply
Planning Regions

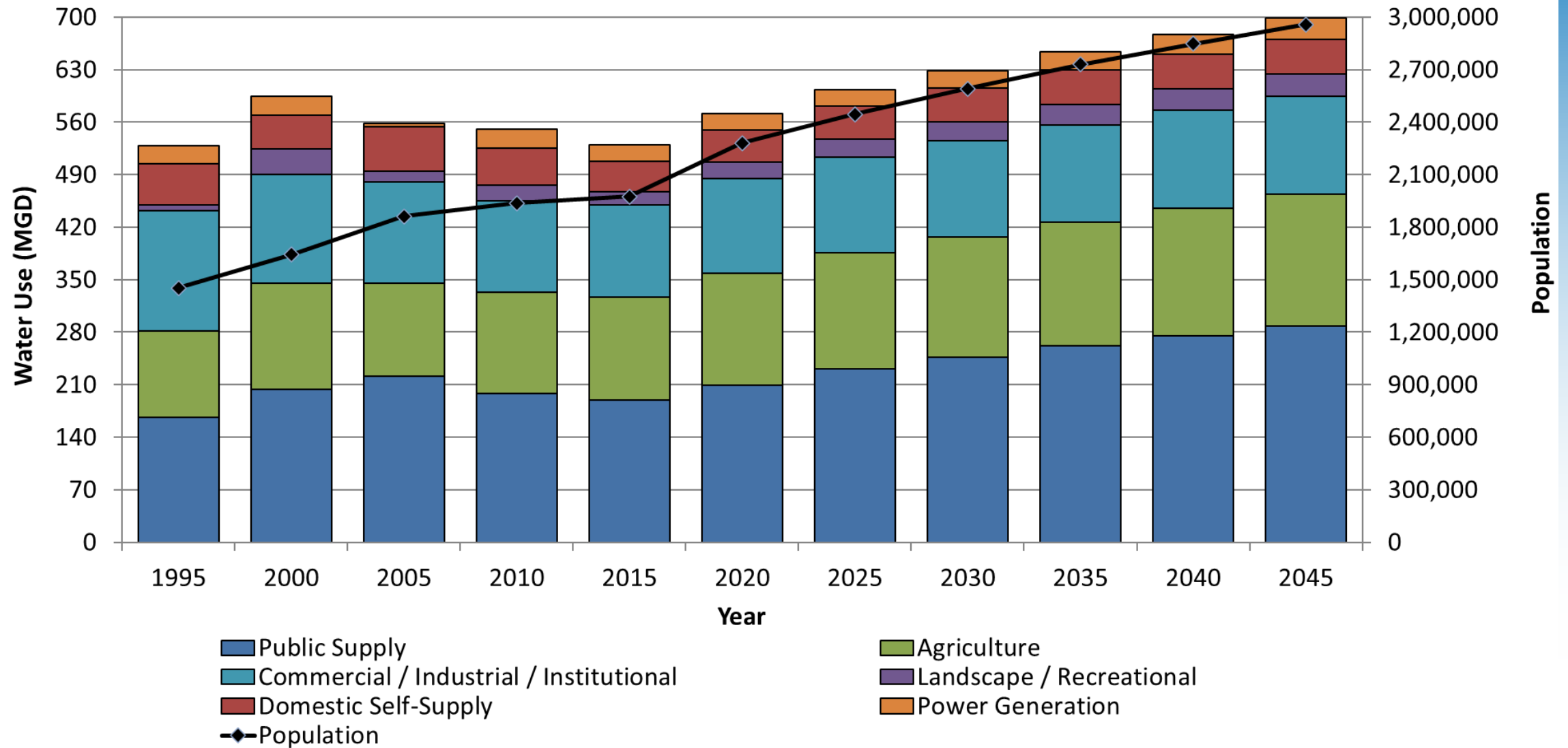


St. Johns River
Water Management District



Regional Water Supply Planning Process



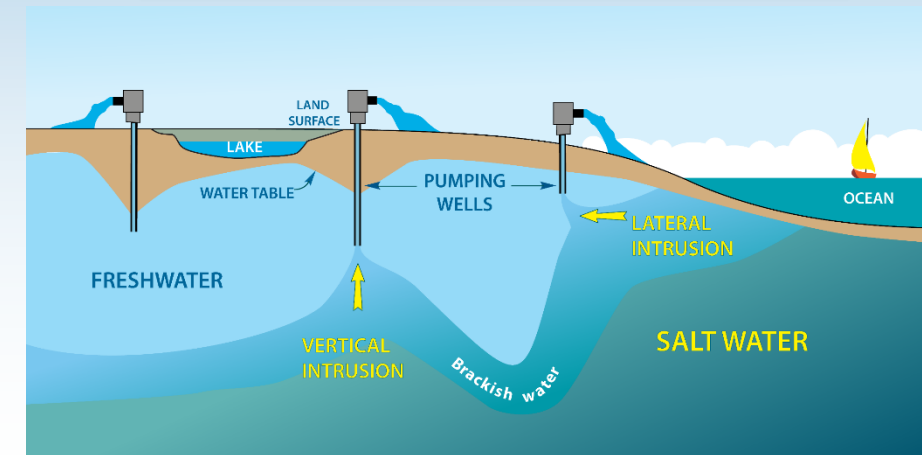


MGD = million gallons per day






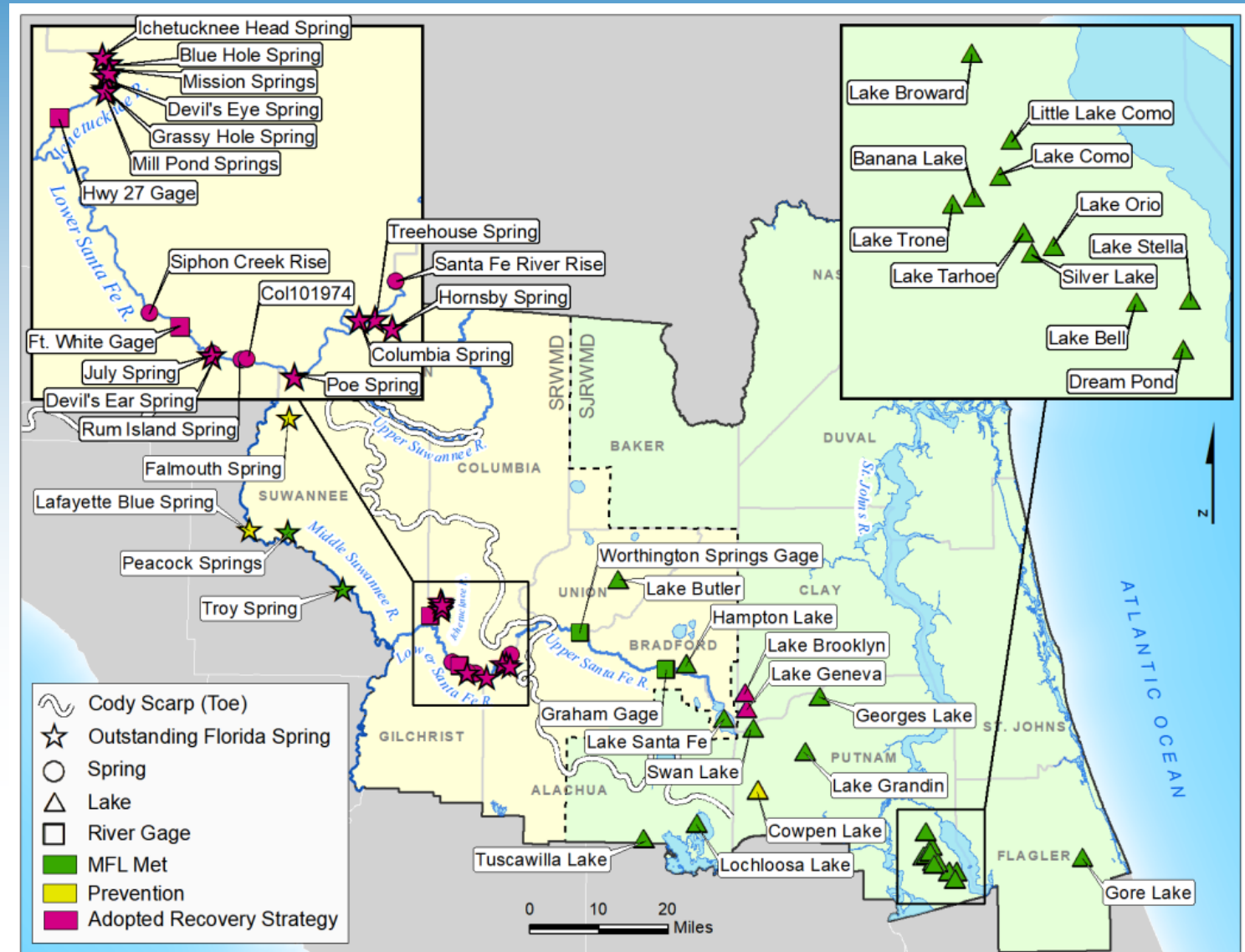
Water Supply Challenges

- Projected demand may exceed sustainable yield in some areas
- Constraints:
 - Minimum flows and levels
 - Spring flows
 - Wetlands
 - Saltwater intrusion
 - Groundwater quality



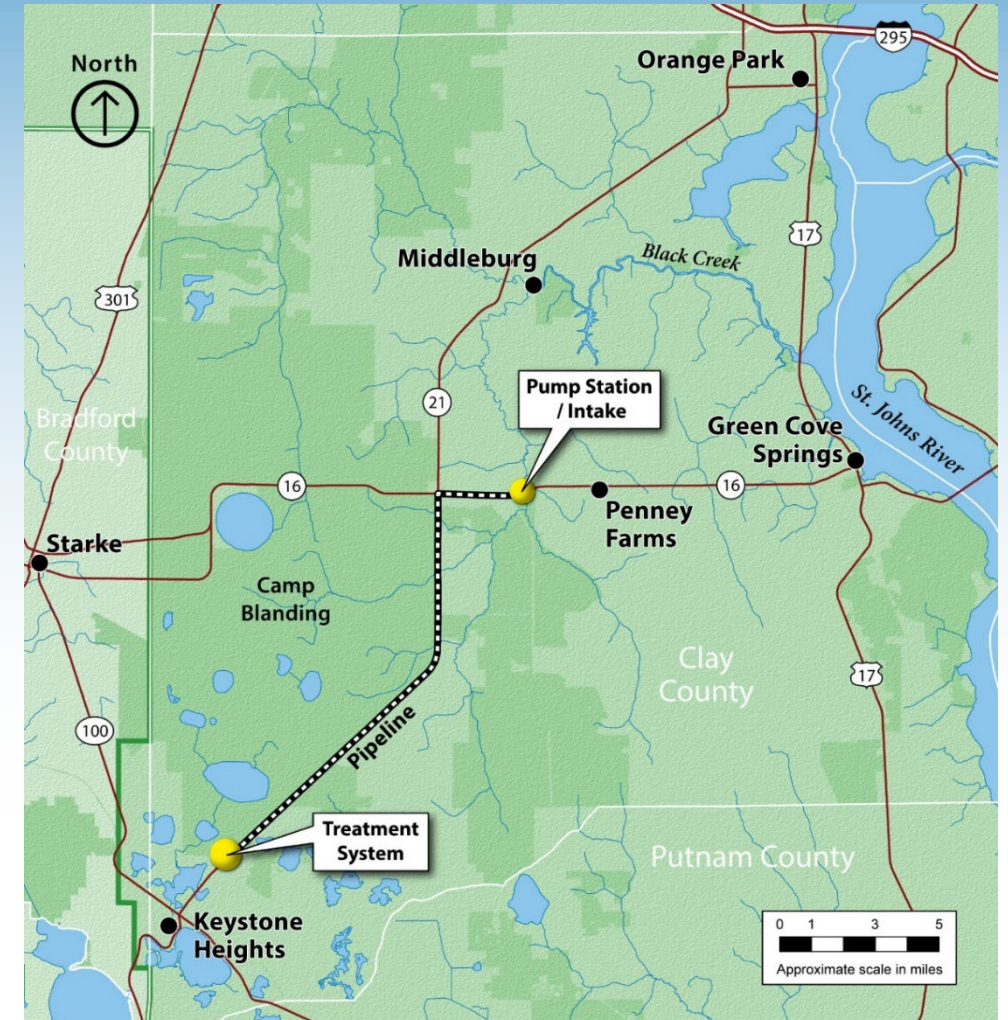
Minimum Flows and Levels (MFLs)

- MFL is currently not met  Recovery Strategy needed
- MFL met, expected to fall below MFL during the next 20 years  Prevention Strategy needed
- MFL met, expected to be met for next 20 years  No Recovery or Prevention Strategy needed



Black Creek Water Resource Development Project

- 7.5 mgd of aquifer recharge
- 30-inch transmission main, 17-miles
- Regional aquifer recharge

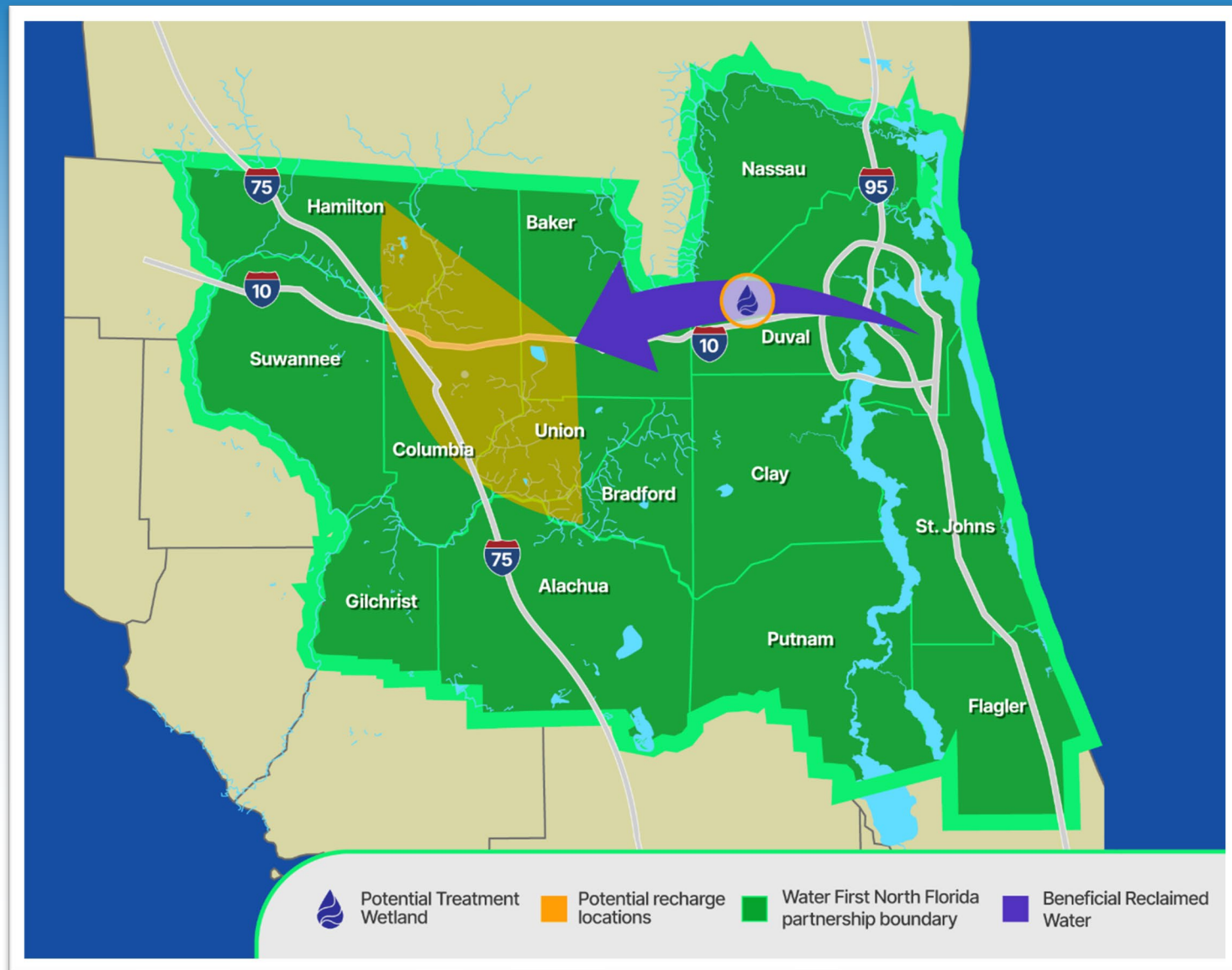




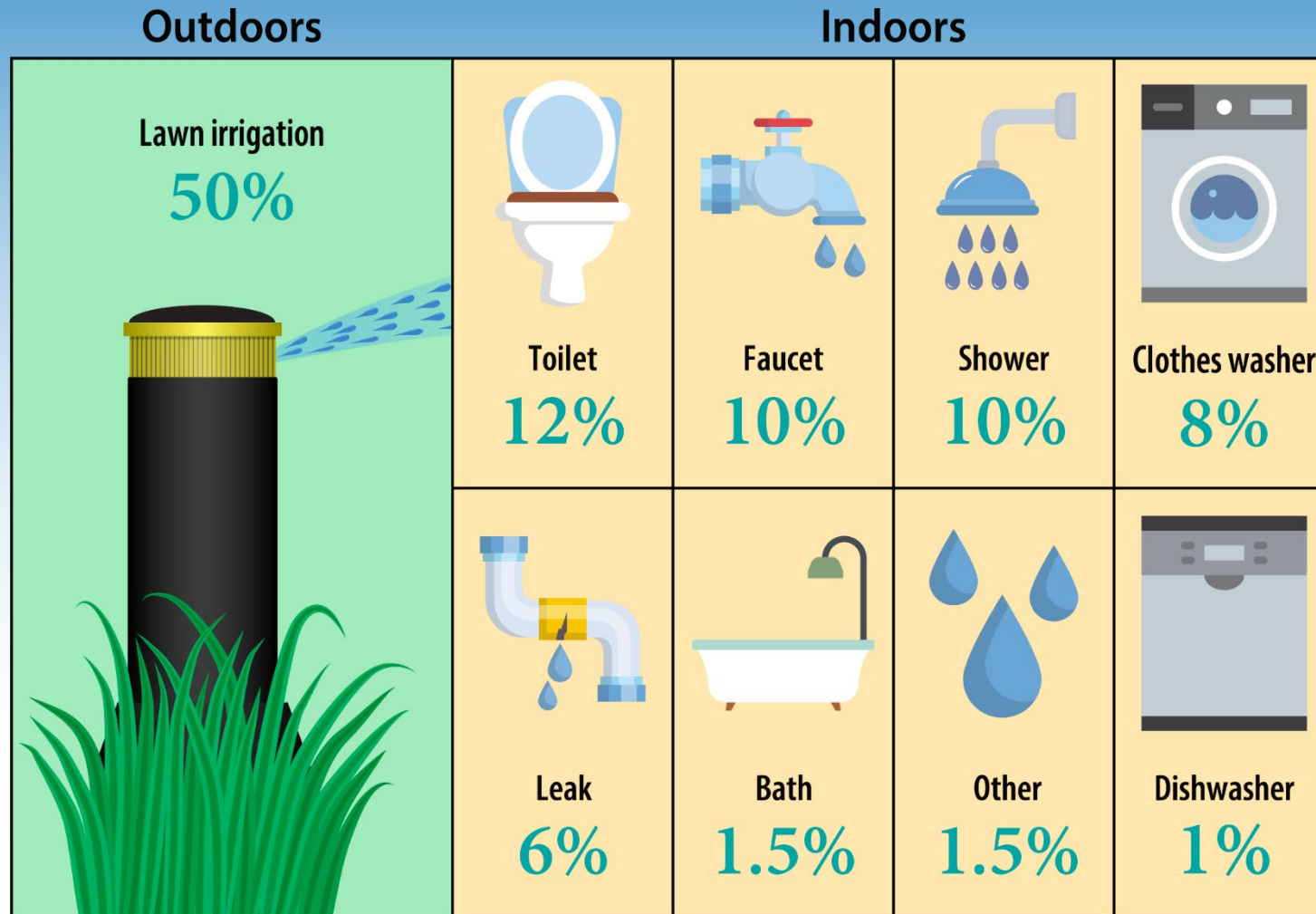
WATER FIRST NORTH FLORIDA

Partnership today for a sustainable tomorrow.

Water First is a 40-mgd project utilizing treated reclaimed water that will receive additional natural filtration via a treatment wetland for aquifer recharge in the North Florida region.



Water Use in Our Homes



5 easy ways to save water outdoors

1. Are you odd? Or even?
Know your watering days.



2. Check your sprinkler system to make sure it's working efficiently.

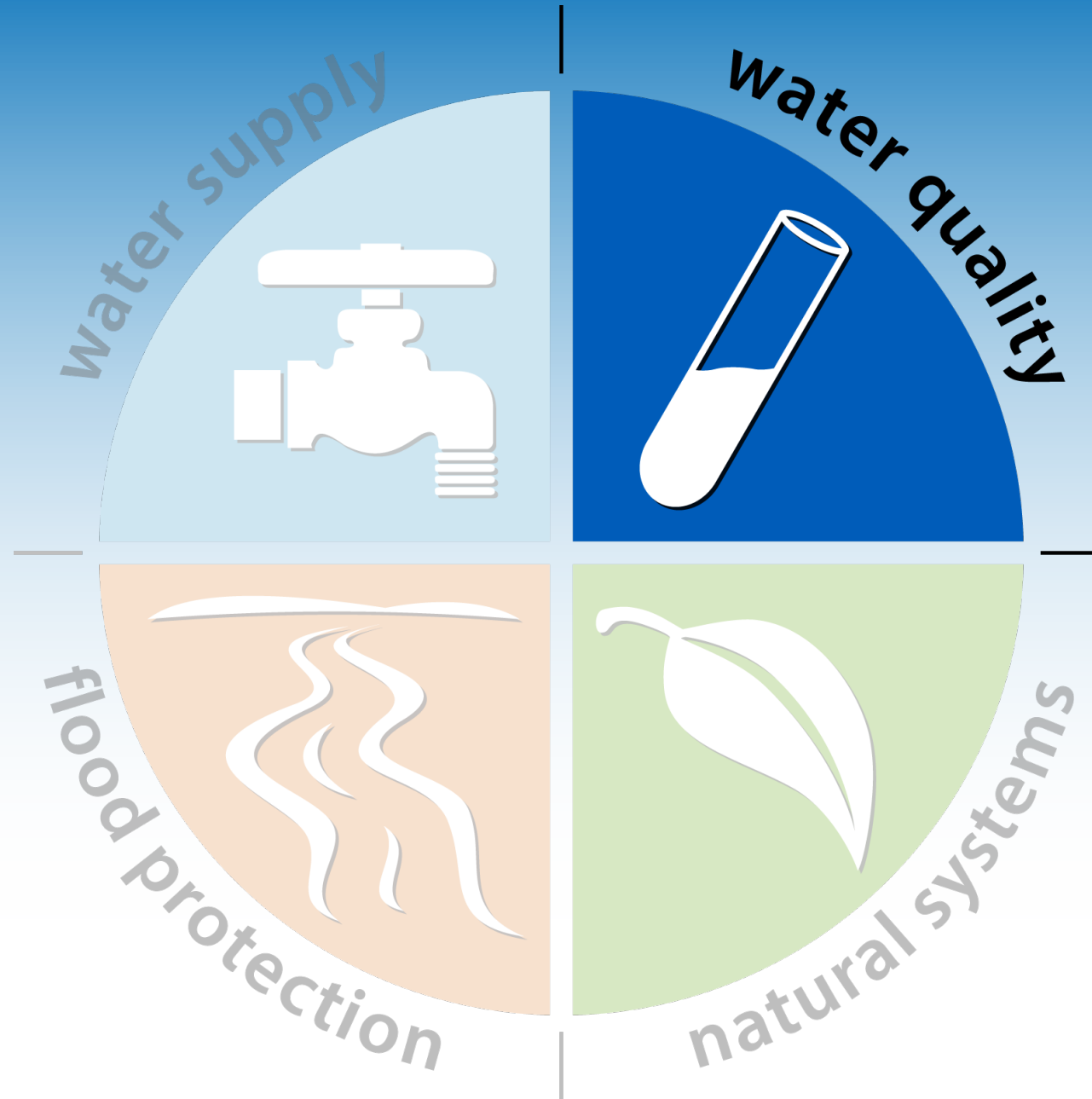
3. Turn off your sprinkler system if there's rain in the forecast.



4. Think "smart" irrigation technology.

5. Right plant, right place.



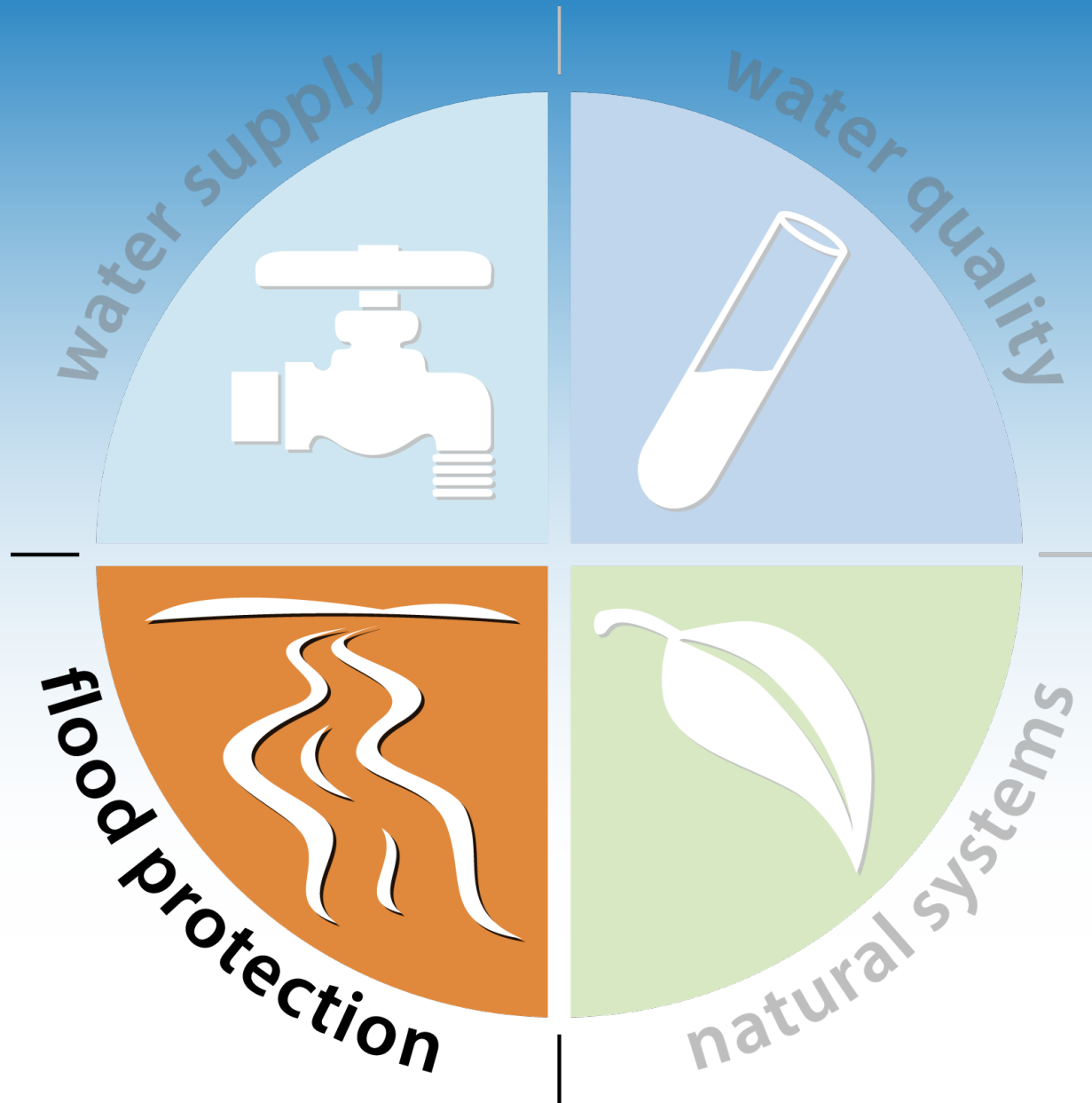


Water Quality: Decisions Based on Sound Science



<https://www.sjrwmd.com/data/>

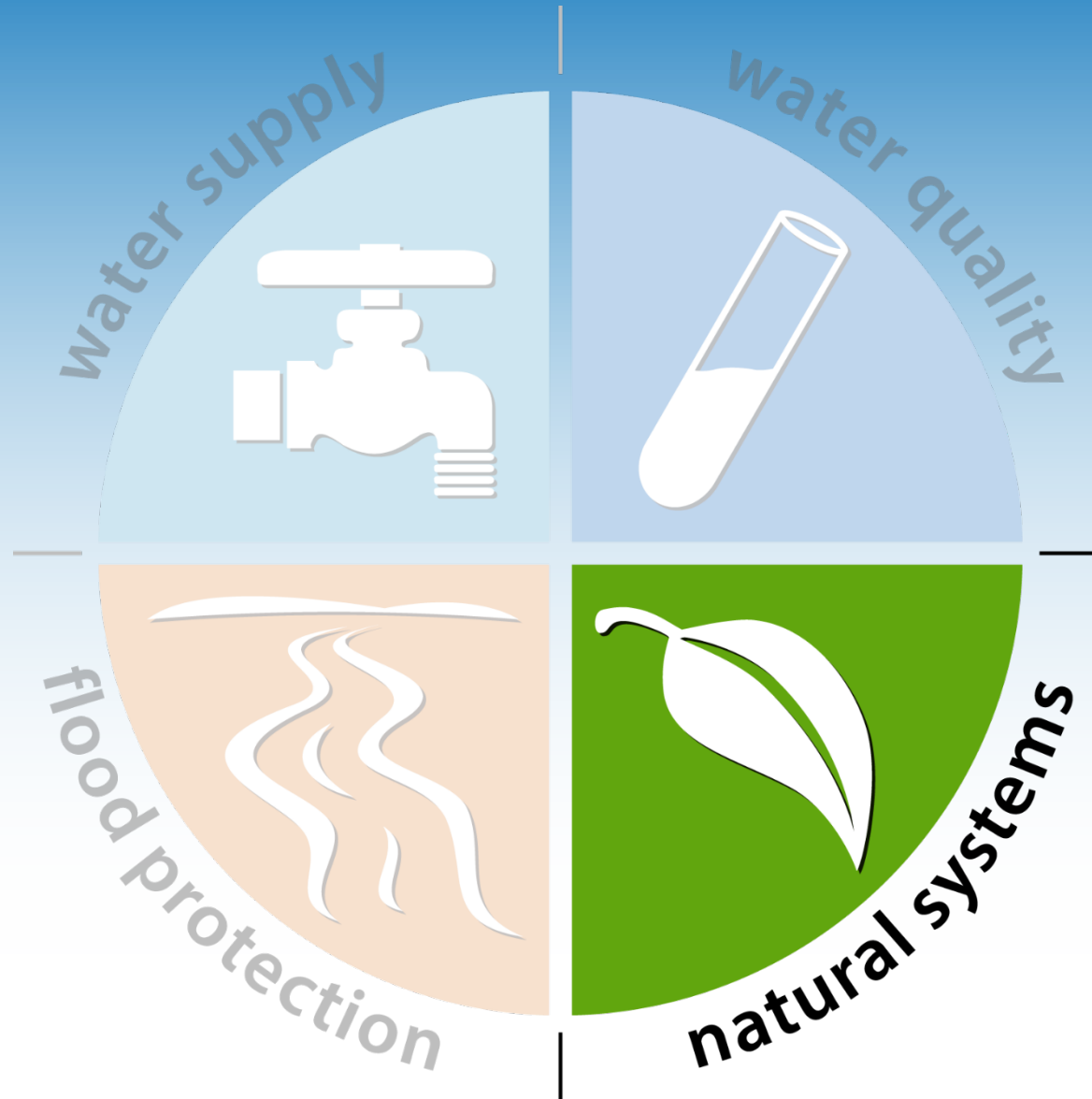




What is Our Role in Flood Protection?

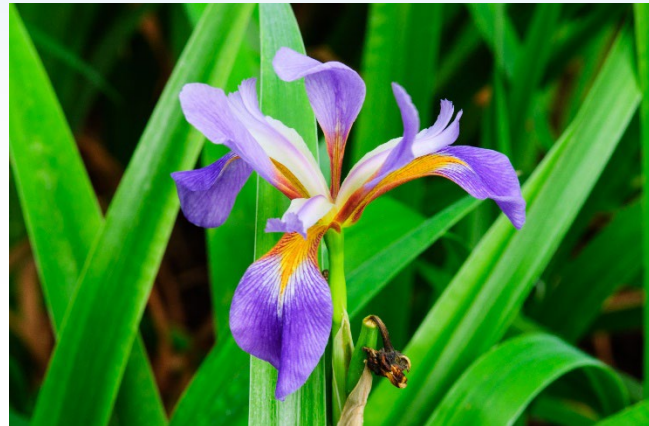
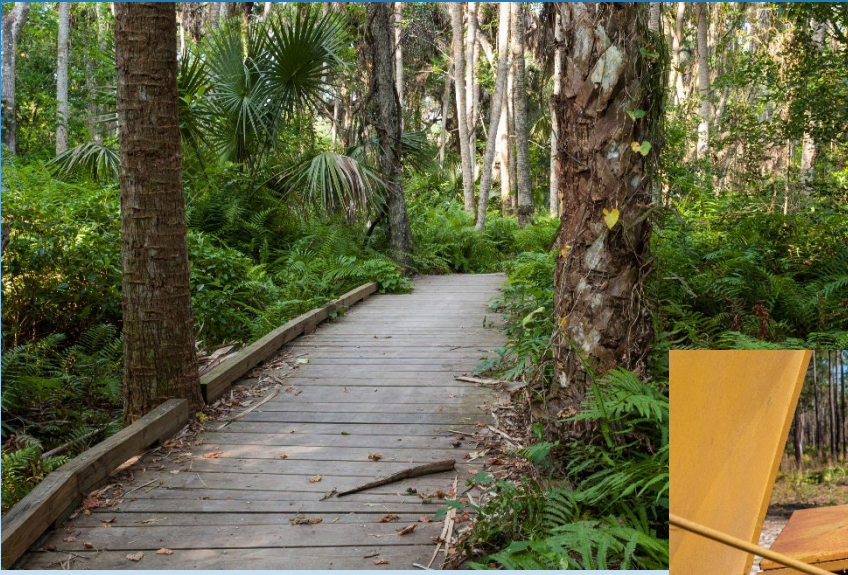
- Work with local governments and other agencies before, during and after a flood event.
- Restore wetlands and floodplain areas that provide flood water storage.





Natural Systems

- The District owns or manages about 778,000 acres of land.
- Parcels are owned or managed by the District or in partnership with other agencies or counties.



Questions?

Cori Hermle, Strategic Planning Basin Coordinator

CMHermle@sjrwmd.com

(386) 643-1963

