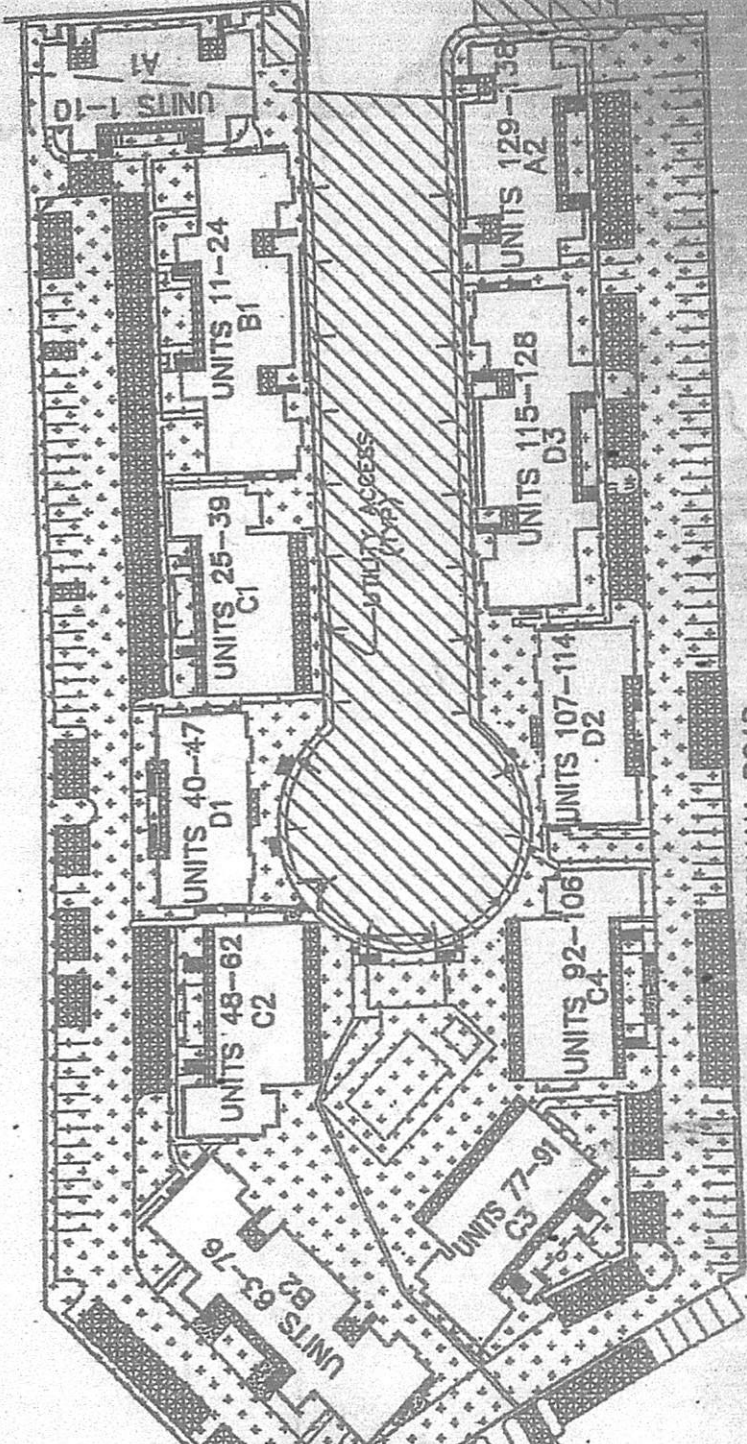






THE VENETIAN ON THE ORTEGA LUXURY CONDOMINIUMS



ORTEGA RIVER
(FORMER MCGIRTS CREEK)



ORTEGA FARMS BLVD.
80' R/W (PUBLIC)
COUNTY ROAD NO. 415

-  BUILDINGS
-  COMMON ELEMENTS
-  ASSOCIATION OWNED PROPERTY
-  LIMITED COMMON ELEMENTS

GRAPHIC SCALE

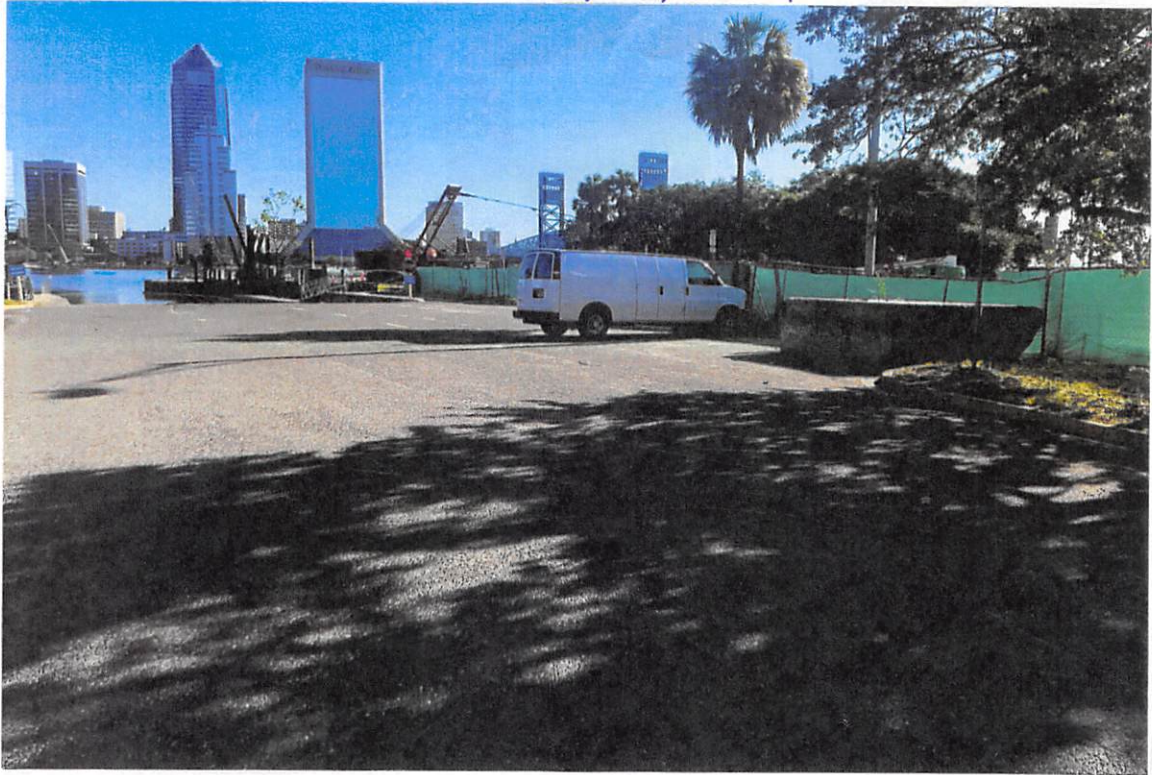


(IN FEET)
1 inch = 100 ft.

Robert M. Angus Associates, Inc.
PLANS SURVEYORS, PLANNERS AND CIVIL ENGINEERS

DATE JANUARY 14, 2004 SCALE 1" = 100'

EVIDENCE FOR 5/14/2024



THIS IS WHERE MY VAN WAS PARKED ON 5/2/24
ON 5/2/24 THIS PARKING LOT WAS FULL OF CARS
ATTENDING A MASH EVENT.