

LAND USE: CGC
ZONING: PUD

SUTTON PARK COURT

EXISTING ACCESS TO
SUTTON PARK DR. S.

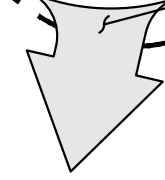
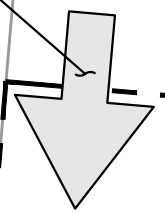
PROPOSED ACCESS/CURB CUT

LAND USE: CGC
ZONING: PUD

LAND USE: CGC
ZONING: PUD

LAND USE: CGC
ZONING: PUD

PROPOSED ACCESS/CURB CUT



LAND USE: CGC
ZONING: PUD

SUTTON PARK DRIVE SOUTH

LAND USE: CGC
ZONING: PUD

"USES PERMITTED IN ACCORDANCE
WITH PUD WRITTEN DESCRIPTION"

RE# 167733 0810

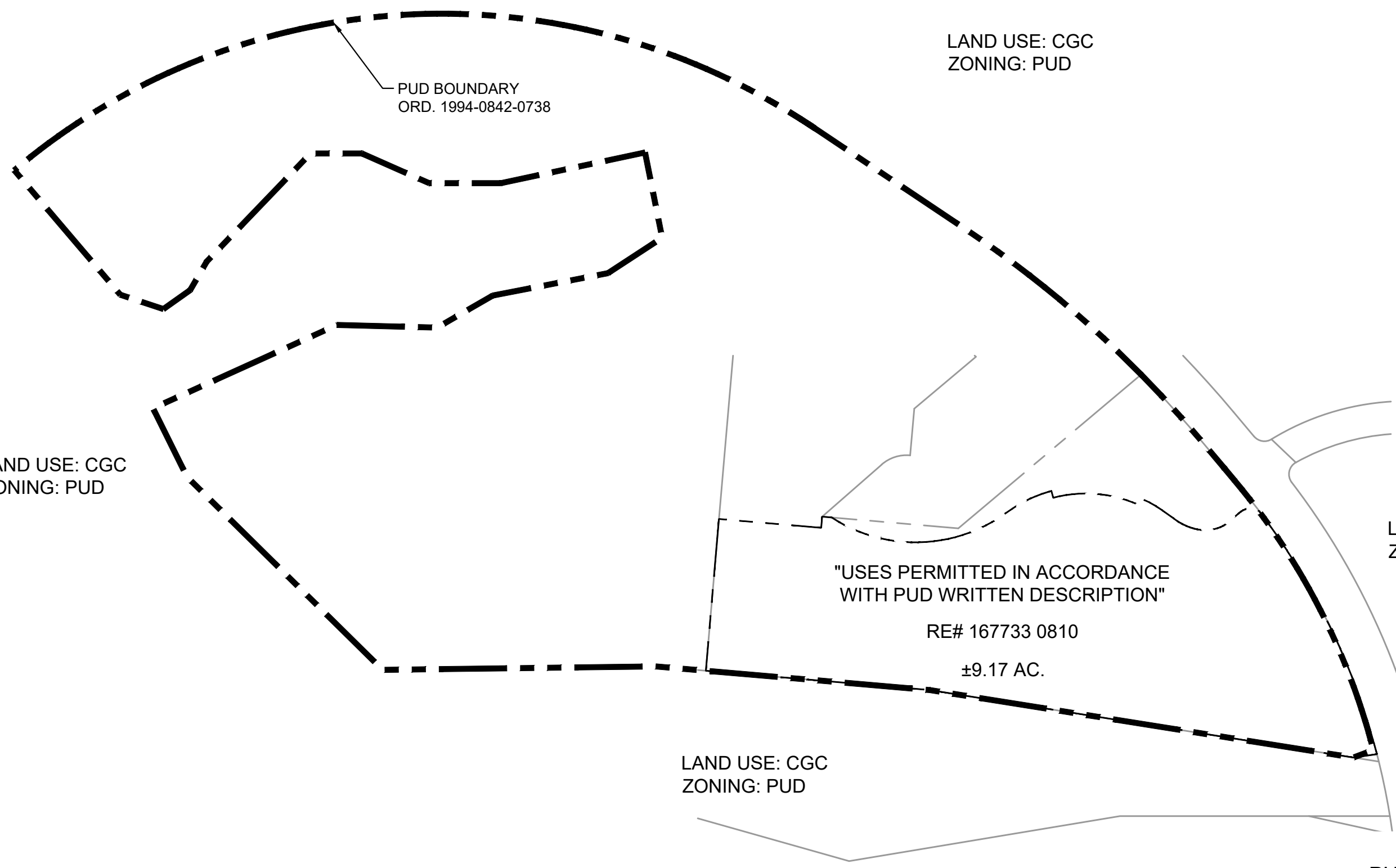
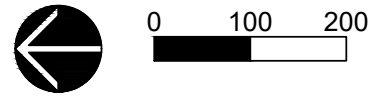
±9.17 AC.

LAND USE: CGC
ZONING: PUD

EXHIBIT A
PUD SITE PLAN
BAINBRIDGE
SUTTON PLACE
March 12, 2021



P:\121121016.01 Bainbridge Sutton PKI\Production\Drawings\Models\121016.01 Base.dwg [EXHIBIT A] 3/12/2021 9:51:55 AM Matthew Melchior



PUD BOUNDARY
ORD. 1994-0842-0738

LAND USE: CGC
ZONING: PUD

LAND USE: CGC
ZONING: PUD

LAND USE: CGC
ZONING: PUD

"USES PERMITTED IN ACCORDANCE
WITH PUD WRITTEN DESCRIPTION"

RE# 167733 0810

±9.17 AC.

LAND USE: CGC
ZONING: PUD

EXHIBIT B
PUD BOUNDARY
BAINBRIDGE
SUTTON PLACE
March 12, 2021



P:\121121016.01 Bainbridge Sutton PKI\Production\Drawings\Models\121016.01 Base.dwg [EXHIBIT B] 3/12/2021 9:51:46 AM Matthew Melchior