

2030 Comprehensive Plan Recreation and Open Space Element

GOAL 2

To establish an active/passive park system in the suburban and rural areas of the City which assist in providing identity, form and a visual framework to the City and its communities.

Objective 2.2

The City's Land Development Regulations, through the Subdivision Ordinances or other Ordinances, shall ensure the provision of open space by private enterprise.

Policies 2.2.1

The City shall require that all new non-residential land uses, except in the Central Business District, provide a minimum of 10% of the property in open space.

2.2.2

The City shall require that all new single family and multi-family developments (residential developments) dedicate land for public parkland (active recreation parks) or provide monetary contribution to the appropriate department.

✓ 2.2.3

A residential subdivision development of 100 lots or more shall provide at least one acre of useable uplands for every 100 lots (and any fraction thereof), or 5% of the total useable uplands area to be platted, whichever is less, to be dedicated as common area and set aside for active recreation. There may be up to two areas for each 100 lots, and the areas shall be a minimum of 0.5 acres in size, unless otherwise approved by the Planning and Development Department, or by the City Council as part of a Planned Unit Development Zoning District.

✓ 2.2.4

A residential subdivision development of 25 lots to 99 lots shall pay a recreation and open space fee of two-hundred-fifty (\$250) dollars per lot, or provide at least four hundred thirty-five (435) square feet of useable uplands for each lot (and any fraction thereof), to be dedicated as common area and set aside for active recreation. The City shall use recreation and open space fees collected pursuant to this subsection to improve, enhance, expand, or acquire recreation areas within the same Planning District in which the fees are paid.

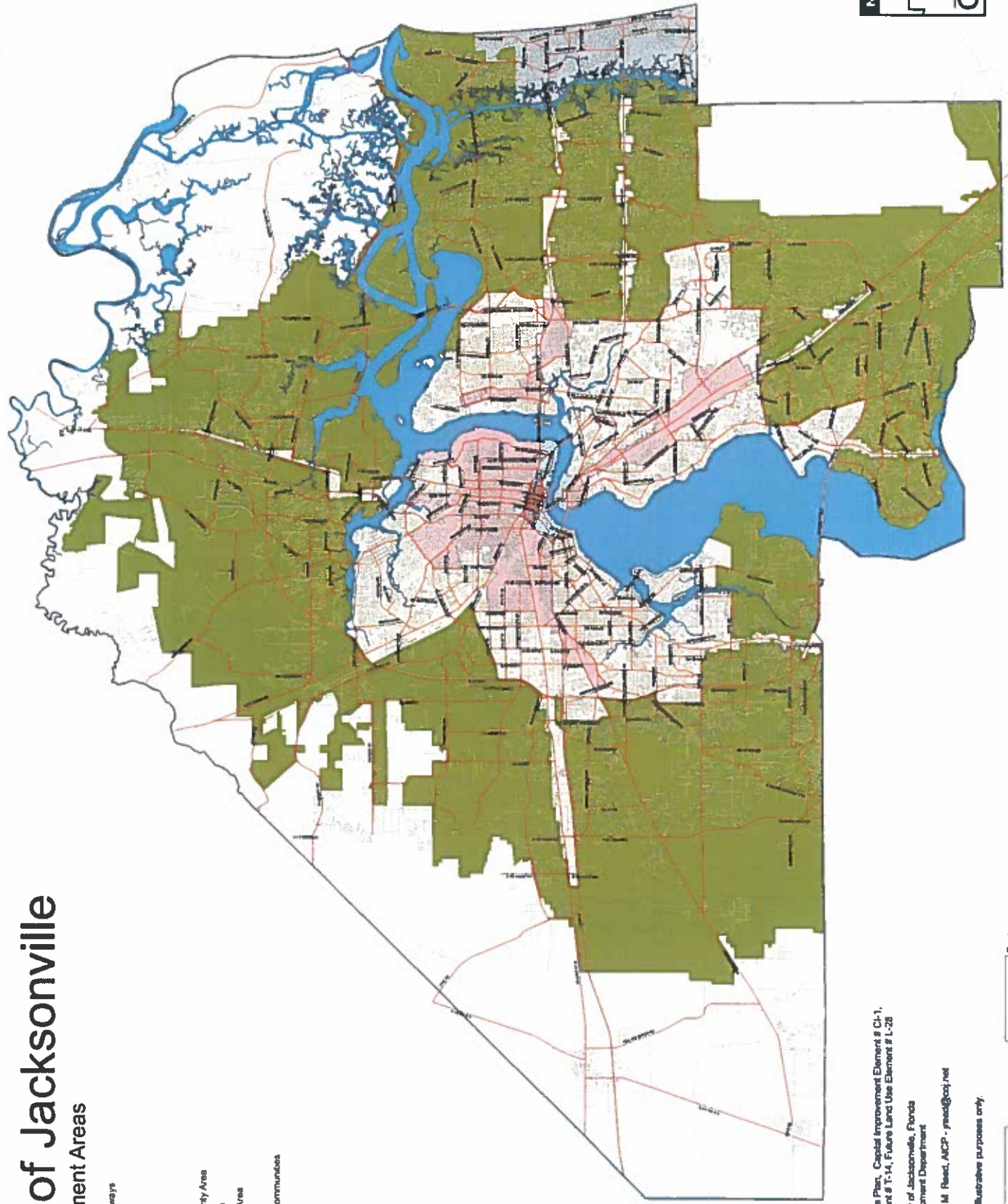
✓ 2.2.5

All multiple-family developments of 100 units or more shall provide 150 square feet of active recreation area per dwelling unit. There may be one area for each 100 units, or the areas may be combined, subject to approval by the Planning and Development.

City of Jacksonville

Development Areas

- Major Highways
- Roads
- River
- NAME
- Downtown
- Urban Priority Area
- Urban Area
- Suburban Area
- Rural Area
- Beaches Communities
- Rural Area



"2000 Comprehensive Plan, Capital Improvement Elements # C1-1, Transportation Element # T-14, Future Land Use Element # L-28
 Data provided by City of Jacksonville, Florida
 Planning and Development Department
 Developed by James M. Reed, AICP - jreed@oci.net
 May 19, 2014
 Content intended for illustrative purposes only.

