



# Florida Inland Navigation District Project Updates & 2017 Proposed List



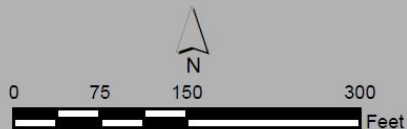


# Project Complete

TE DEVELOPMENT MAP

## Arlington Lions Club Park FIND Project

- Existing Trail
- Existing Boardwalk
- New ADA ramp
- Fix existing boardwalk (approx. 100 ft)
- Proposed Boardwalk Extension (775 ft)



Fishing Pier

Boat Ramp

Pavilion

Boat  
Trailer  
Parking

JSO Fence Line

JSO  
Marine  
Patrol

Restroom

Trailhead  
Parking

775 ft. Boardwalk Extension  
(elevated, 8 ft. wide)

New ADA  
ramp

Fix approx. 100 ft. section  
of existing boardwalk

Pavilion

To Blue Cypress  
Regional Park







An aerial photograph of the Wayne B. Stevens Boat Ramp. The ramp is a concrete structure extending into a body of water. Three sections of the ramp are highlighted with light blue arrows pointing to them from the text 'Dock Replacement'. The surrounding area is densely wooded with green trees. A parking lot with several vehicles is visible on the land side of the ramp. A large light blue box with the text 'Project Complete' is overlaid on the right side of the image. A white box with the text 'SCOPE OF WORK' and 'Replace existing floating docks & gangways' is overlaid on the bottom right.

## Wayne B. Stevens Boat Ramp

**Project Complete**

**Dock  
Replacement**

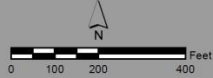
### **SCOPE OF WORK**

Replace existing floating  
docks & gangways





# Exchange Club Island Park Master Site Plan



## Legend

White Text = Phase 1 (Facilities in FIND grant)

Yellow Text = Future Development Phases

### Planned Facilities

--- Trail, On-grade

--- Trail, Elevated

--- Camping Area

Structure

### Water Depths

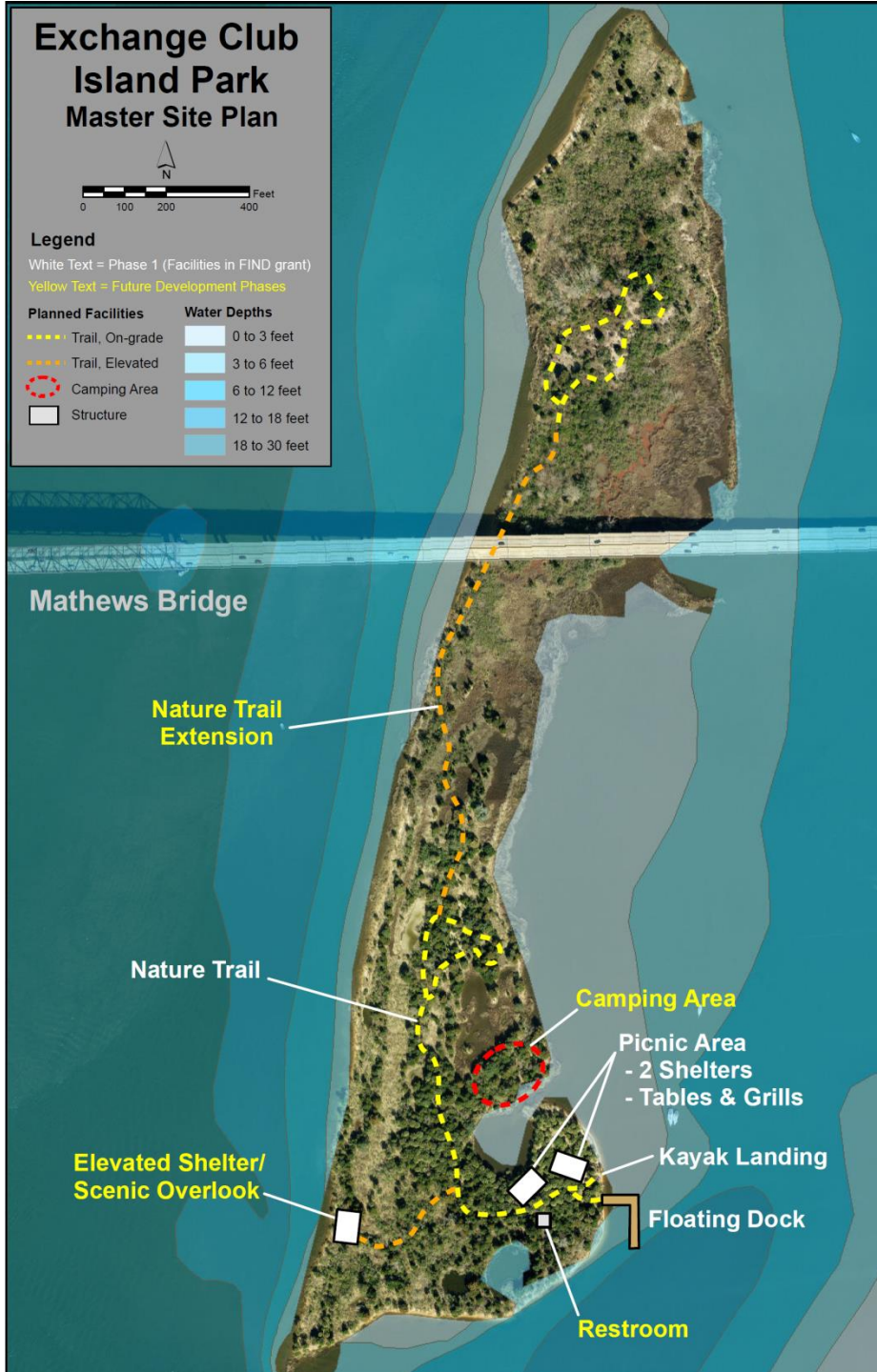
0 to 3 feet

3 to 6 feet

6 to 12 feet

12 to 18 feet

18 to 30 feet



# Dock project to begin in early February



## Pottsburg Creek dredge

Dredge to  
begin in early  
February



Confluence  
with St. Johns  
River

### **SCOPE OF WORK**

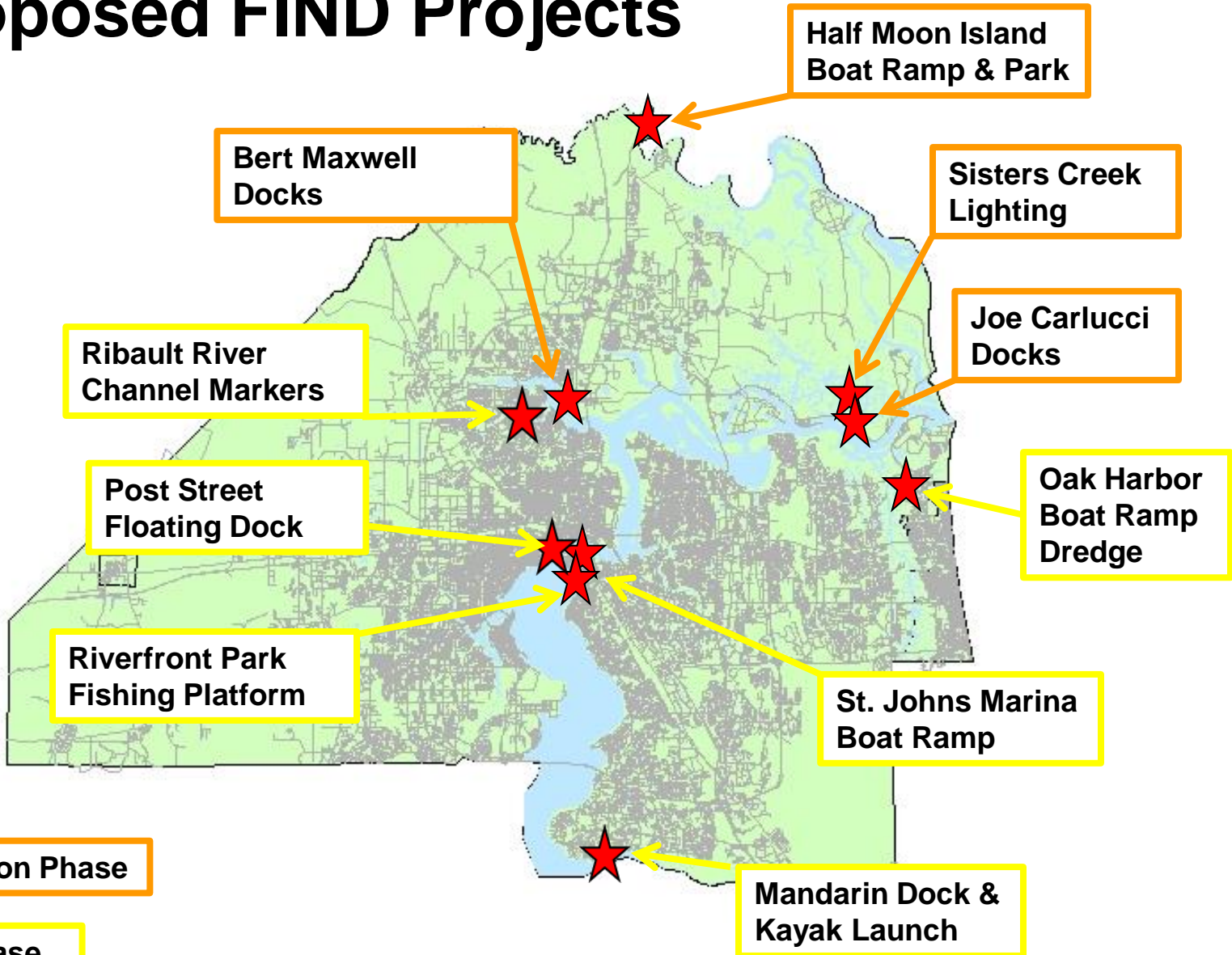
Dredging 13,500 CY  
plus new buoys and  
safety signage

Beach Blvd  
Public Boat  
Ramp

Image U.S.



# Location of 2017 Proposed FIND Projects





# Joe Carlucci Boat Ramp Dock Replacement / Extension

Council District 2

Scope: Replace floating docks  
and gangways and extend one  
dock to support high traffic





# Half Moon Island Preserve Boat Ramp & Park Development Phase 2B

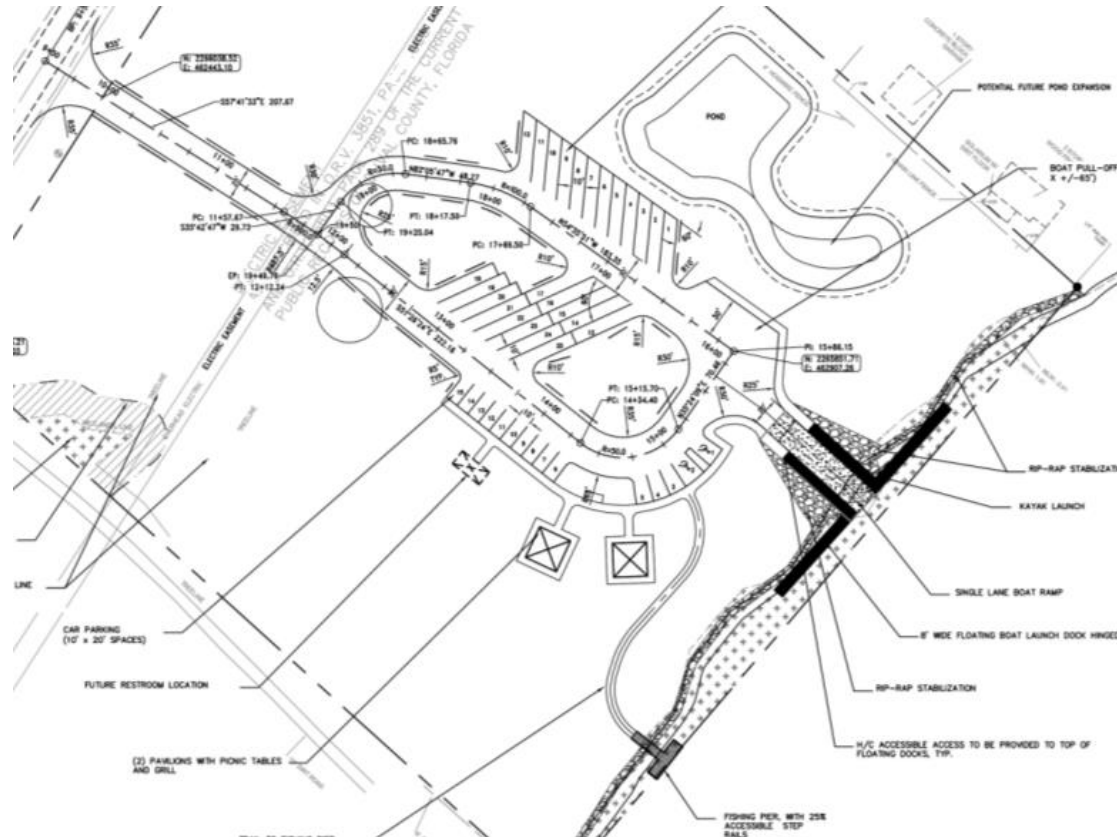
## Council District 2

### Phase 2B Scope:

Construct fishing platform, shelters, floating dock, turn lanes, additional revetment and restroom

---

Phase 2A (2016 Funded Project)  
Scope: Construct boat ramp, floating dock, facility entrance and parking, shoreline revetment, site clearing/grading and stormwater pond





# Sisters Creek Boat Ramp Lighting Phase 2

Council District 2

Scope: Install second half  
of parking lot lighting





# Post Street Floating Dock

Council District 14

Scope: Design/permit a  
floating dock at end of Post Street





# Riverfront Park Fishing Platform

Council District 5

Scope: Design/permit fishing platform

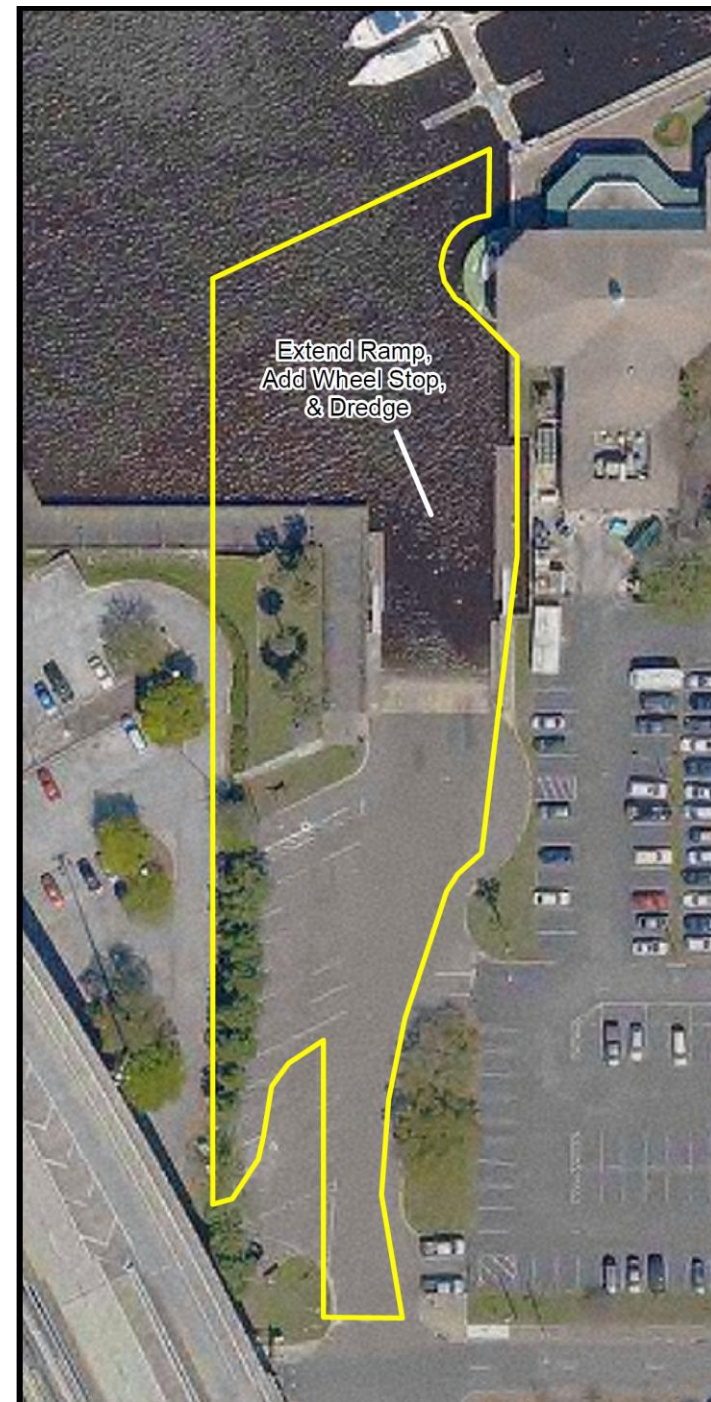




# St. Johns Marina Boat Ramp Extension

Council District 5

Scope: Design/permit ramp extension  
into deeper water w/wheel stop & dredge

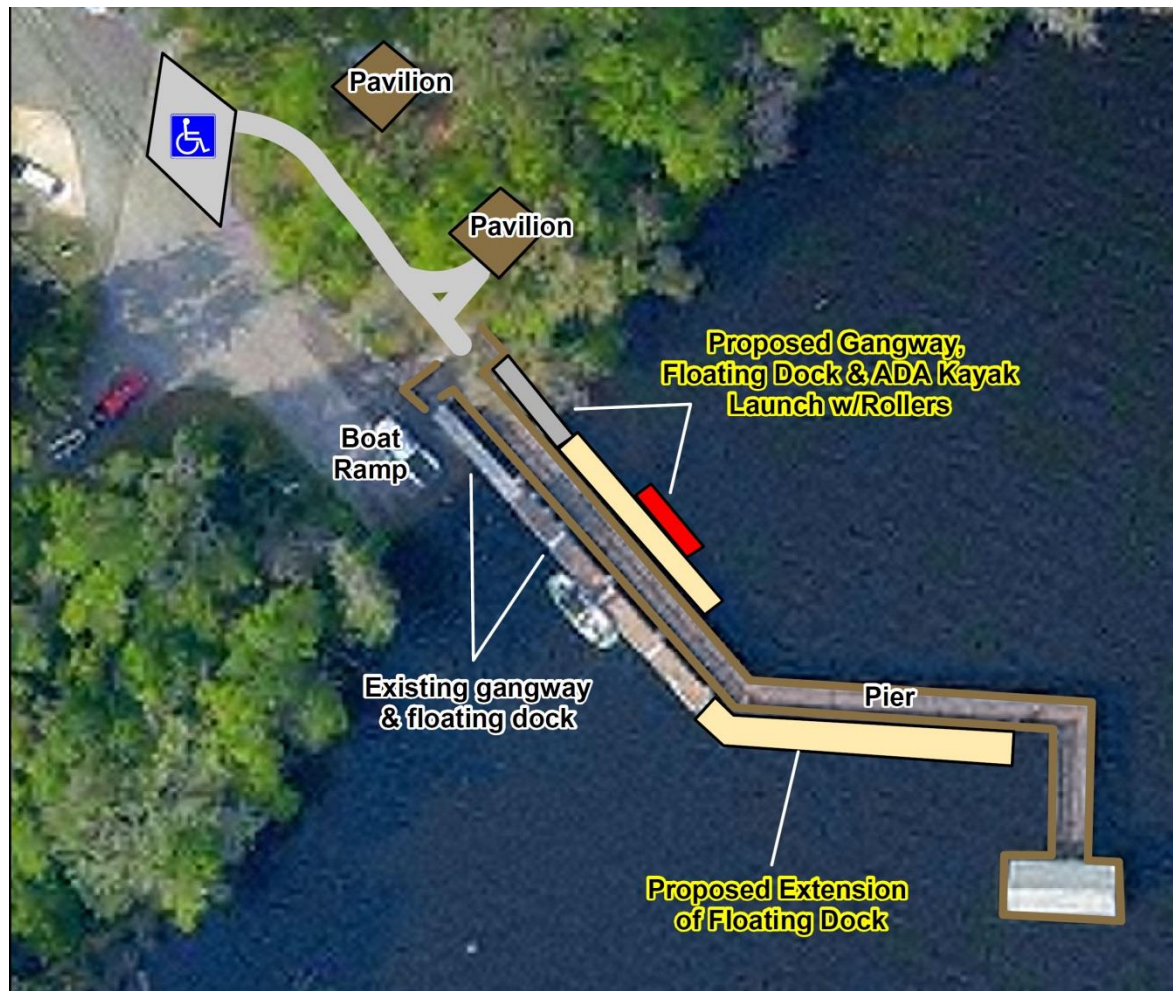


# Mandarin Park

## Dock Extension & ADA Kayak Launch

Council District 6

Scope: Design/permit extension of existing floating dock at boat ramp & new floating dock w/ADA kayak launch





# Bert Maxwell Boat Ramp Dock Modifications

Council District 8

Scope: Modify existing docks  
to function properly

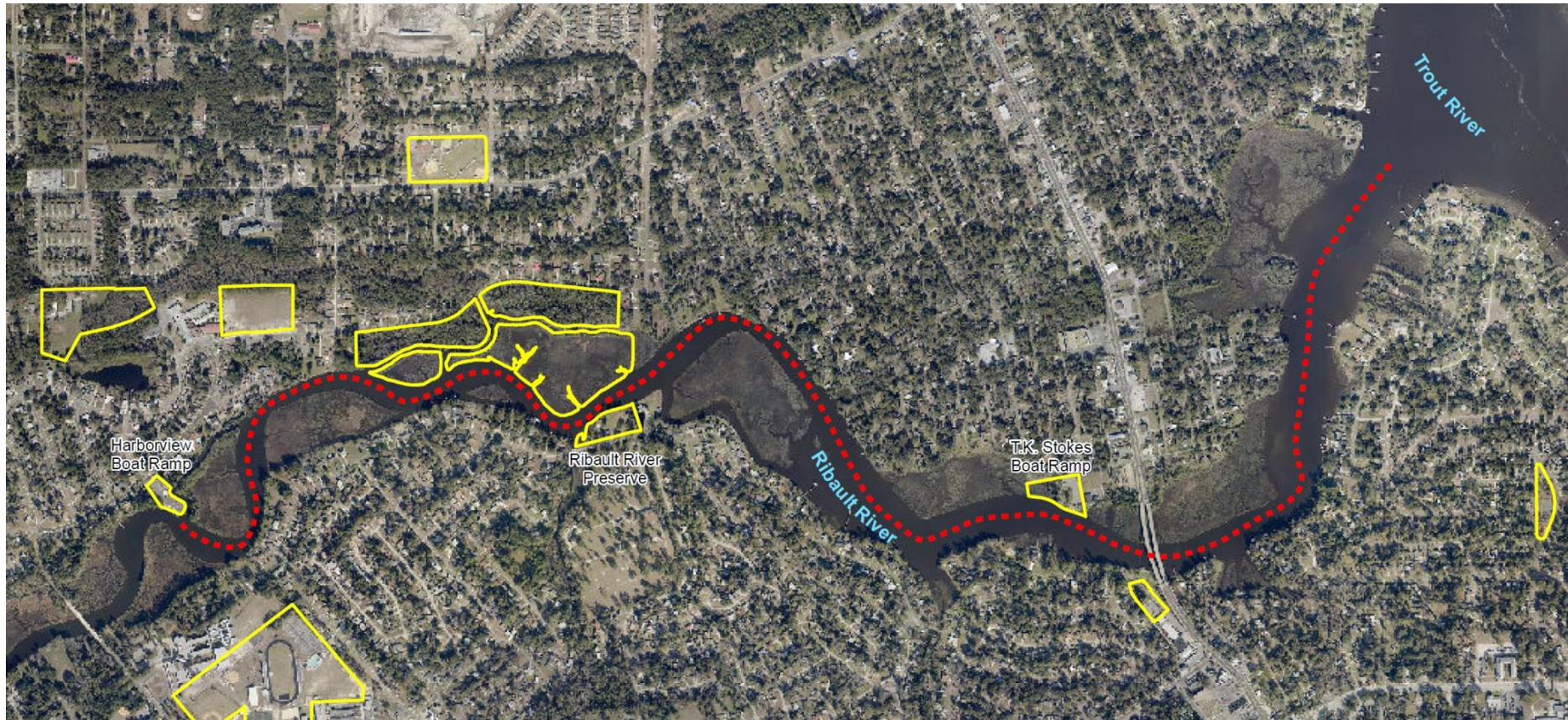




# Ribault River Channel Markers

Council District 8 & 10

Scope: Design/permit channel markers within Ribault River; approx. 3.1 miles





# Oak Harbor Boat Ramp Dredge

Extra Project Beyond Anticipated Funding Cap

Council District 13

Scope: Design/permit dredge project  
from boat ramp to channel

