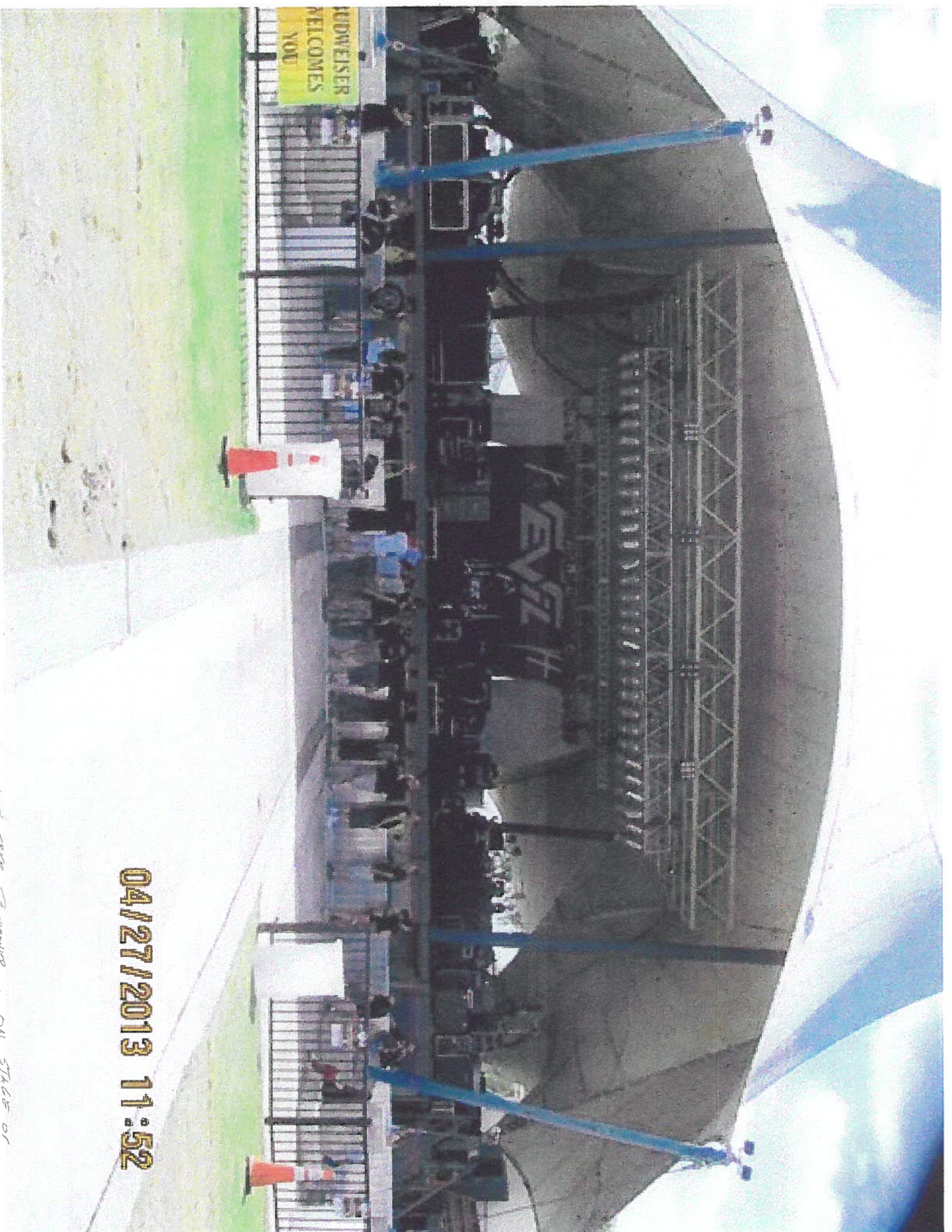


**Welcome To Rockville
Jacksonville, Florida
April 27 & 28, 2013**

**Environmental Quality Division
Noise Survey**

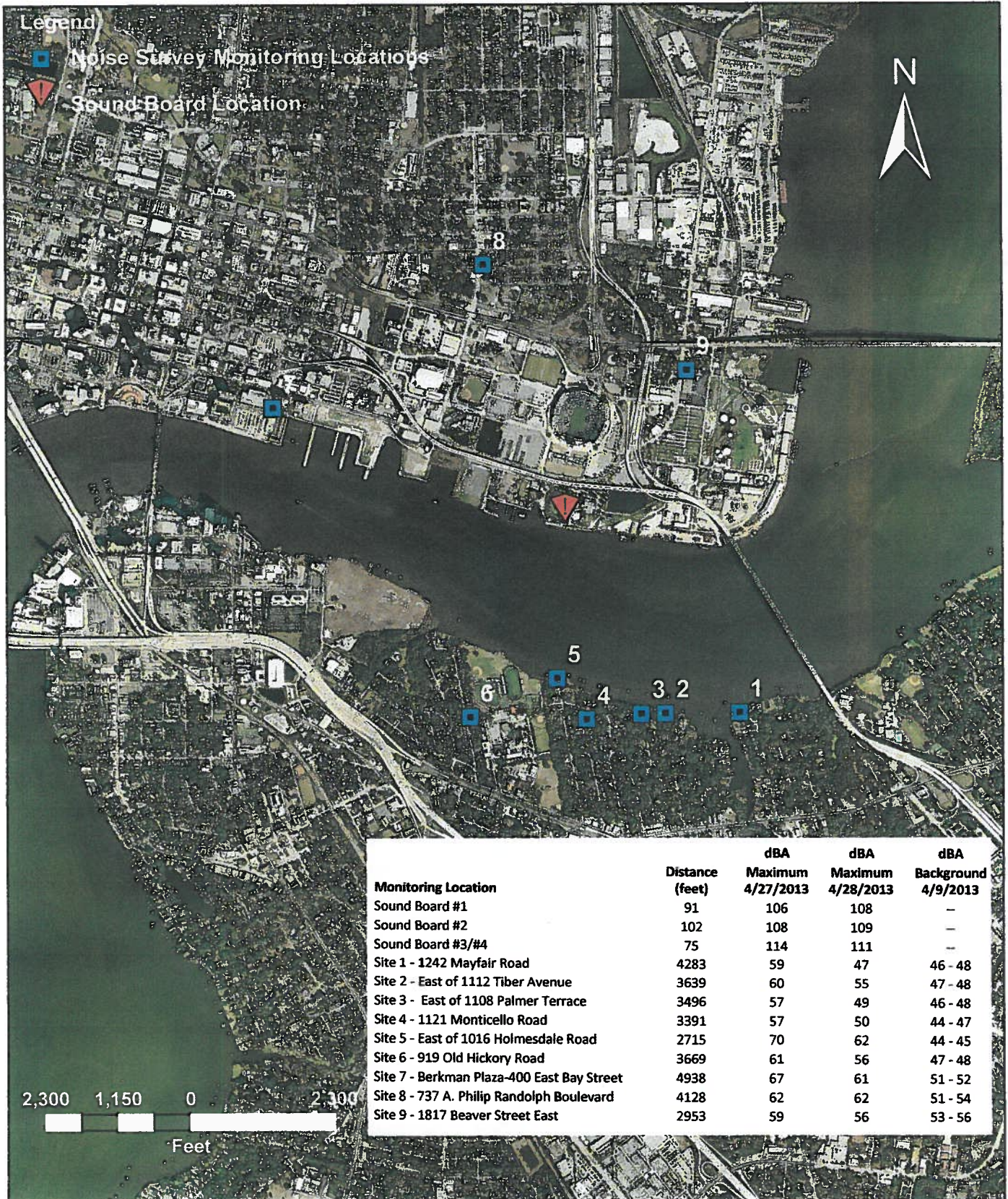


04/27/2013 11:52

and were turned on the stage of







Metro Park Noise Survey - Welcome to Rockville

April 27 - 28, 2013

Metropolitan Park
Welcome to Rockville
April 27 & 28, 2013
Environmental Quality Noise Survey

Project

Conduct a noise survey of the April 27th and 28, 2013 Welcome to Rockville Concert, held at Metropolitan Park, Jacksonville, Florida.

Objective

Assess the noise impact upon the surrounding community from the two day rock concert.

Methodology

EQD selected nine (9) noise monitoring locations in the surrounding community, some based upon previous noise complaints in order to assess community impact from the subject event.

EQD selected three (3) monitoring locations in Metropolitan Park to measure the noise levels from the sources generating the music/noise.

EQD structured the noise survey to collect noise readings from 1200 hours to 2320 hours on Saturday and 1100 hours to 2220 hours on Sunday.

EQD had two staff measuring noise levels in St. Nicholas, two staff measuring noise levels at the various sound boards within Metropolitan Park, and one staff member measuring noise levels in the Springfield area.

In order to correlate the music level readings, EQD staff took simultaneous noise level readings at the top of the hour, twenty minutes after the hour, and forty minutes after the hour. Also to define the range of the noise levels, at each monitoring event EQD continued to take readings at the top of each subsequent minute for an additional four minutes, thus yielding a total of five noise level readings for each noise measuring event.

The EQD staff, off-site, moved from one preselected monitoring location to eventually cover all nine off-site locations, while the on-site EQD staff measured the noise levels from the various sound board locations.

The EQD utilized sound meters factory calibrated within one year, and field calibrated the meter pre and post measurements. The noise level measurements were made using the A scale and the FAST response of the meter.

EQD did collect a limited amount of Octave Band data on both Saturday and Sunday.

Survey Results

EPB Rule 4, Noise Pollution Control limits the noise levels to residential land uses to 60 dB (A) in the day time and 55 dB (A) at nighttime.

The dB (A) noise levels collected by EQD reflect that the subject concert generated the following noise dB (A) exceedances.

<u>Date</u>	<u>Location</u>	<u>Time, HRS</u>	<u>dB (A)</u>
04/27	#4	2240	53-56
04/27	#5	1500	63-64
04/27	#5	1700	60-65
04/27	#5	1900	59-62
04/27	#5	2100	66-70
04/27	#6	2120	58-61
04/27	#6	2220	54-58

Based upon the limited Octave Band readings EQD made, the event generated the following potential Octave Band exceedances.

<u>Date</u>	<u>Time (Hr.)</u>	<u>Location</u>	<u>Freq. Hz</u>	<u>Measured/STD (dB)</u>
04/27	1255	#5	31.5	78.3/75
04/27	1255	#5	63	76.4/74
04/27	1255	#5	125	68.7/67
04/27	1455	#5	31.5	76.9/75
04/27	1455	#5	63	89.7/74
04/27	1455	#5	125	74.2/67
04/27	1455	#5	250	63.6/63
04/27	1555	#5	63	75.8/74
04/27	1555	#5	125	70.5/67
04/27	1855	#5	31.5	76.8/75
04/27	1855	#5	63	87.1/74
04/27	1855	#5	125	74.7/67
04/28	1730	#5	31.5	78.4/75
04/28	1730	#5	63	84.8/74
04/28	1730	#5	125	72.4/67
04/28	1930	#5	63	86.2/74
04/28	1930	#5	125	71.8/67

Welcome To Rockville

Saturday April 27, 2013

EQD Noise Survey

Distance	Time	1200	1220	1240	1300	1320	1340	1400	1420	1440	1500	1520
	Location											
91'	SB # 1	62-64		87-95	84-97			74-104	95-103	NR	93-96	80-100
102'	SB # 2		62 94-99			71-89	81-97			101-104	NR	
75'	SB # 3/4					101-104	100-101	99-104	103-104	78-104	100-104	101-104
4283	#1			48-50			49-50			49-50		
3639	#2	49-54		NBN			D	50-51		D	50-53	
3496	#3		50-52				42-43		50-51		BC	46-50
3391	#4			45-49			44-48			D		BC
2715	#5	56-60		MBA			MBA	52-60		48-51		
3669	#6	MA			MVA			MVA	51-54		MVA	63-64
4938	#7		MA			50-53			MA			43-60
4128	#8	49-59		56-63			60-63			57-65		
2952	#9	FBN		NBN, T			NM, T	52-57	46-57	NM, T	49-52	
			47-49			47-50						47-49
			FBN			NM						
Wind Speed			< 3 mph				3-5 mph			<3 mph		
Wind Direction			N/NE				E			N/NE		

Welcome To Rockville

Saturday April 27, 2013

EQD Noise Survey

Distance	Time	1540	1600	1620	1640	1700	1720	1740	1800	1820	1840	1900
91'	SB # 1	80-100	98-105				93-106	103-106	99-104	NR		
102'	SB # 2			77-101	83-107	96-99					91-101	77-99
75'	SB # 3/4	99-104	100-103	101-107	84-98	101-109	103-109	NR	NR	NR	109-109	101-110
4283	#1	46-52			57-59			NR			48-51	
		D										
3639	#2		49-51			58-59		NR				49-52
						D						D
3496	#3			48-57			45-47		NR	NR		
3391	#4	45-48			40-57			NR			53-57	
		MBA			MA						MA	
2715	#5		56-59			60-65			NR			59-62
			MA			MA						
3669	#6			48-50			52-57		NR	NR		
				MA			MA					
4938	#7	58-63			55-64			NR			57-61	
					NM, T							
4128	#8		51-54			58-62			NR			50-56
						KP						
2952	#9			51-59			51-58		NR	NR		
				NMR			NM, T					
Wind Speed		< 3 mph			< 3 mph			< 3 mph			< 3 mph	
Wind Direction		E/NE			N/NE			N			N	

Welcome To Rockville

Saturday April 27, 2013

EQD Noise Survey

Distance	Time	1920	1940	2000	2020	2040	2100	2120	2140	2140	2200	2220	2240
	Location												
91'	SB # 1	75-102	97-103	86-98							102-105	82-106	100-104
102'	SB # 2				82-89		85-108	93-106	85-104	NR			
75'	SB # 3/4	103-114	101-107	84-92	91-97	89-96	89-95	90-92	89-89	89-91	89-94	88-89	
4283	#1		49-51			48-49	D		43-48				47-48
3639	#2			49-54			46-49			54-60			
3496	#3	46-53			49-54			49-54			48-55		
3391	#4		51-54			53-57			45-47				53-56
2715	#5			NR		66-70	MA			NR			
3669	#6	48-50			54-60		58-61				54-58		
		MBA			MA, D		MA				MA		
4938	#7		57-61			52-67			62-64				57-64
						NM, T			NM				
4128	#8			47-52						50-54			
2952	#9	51-53			53-56		51-56				46-48		
							NM				NM		
	Wind Speed		< 3 mph						< 3 mph				< 3 mph
	Wind Direction		E/NE				NE		NE				E

Welcome To Rockville

Saturday April 27, 2013

EQD Noise Survey

Distance	Time	2300	2320	2340
	Location			
91'	SB # 1	Concert Over		
102'	SB # 2			
75'	SB # 3/4	79-88		
4283	#1			
3639	#2	43-44		
3496	#3		42-43	
			F	
3391	#4			
2715	#5			
3669	#6	42-44		
		NM		
4938	#7			
4128	#8	49-61		
2952	#9		51-54	
	Wind Speed			
	Wind Direction			

- BC- Birds Chirping
- D- Drums
- EM- Equipment Malfunction
- F- Frogs
- FBN- Faint Band Noise
- KP- Kids Playing
- MA- Music Audible
- MBA- Music Barely Audible
- MVA- Music Very Audible
- NBN- No Band Noise
- NM- No Music
- NNR-Noise Not Related
- P- Profanity
- T- Traffic

Welcome To Rockville

Sunday April 28, 2013

EQD Noise Survey

Distance	Time	1100	1120	1140	1200	1220	1240	1300	1320	1340	1400
	Location										
91'	SB # 1				99-103	97-103		67-108	96-106	87-101	
102'	SB # 2	64-73	79-98	97-103		99-108					99-104
75'	SB # 3/4	84-100	100-103	92-103	101-104	101-105	87-103	97-103	102-104	95-104	101-104
4283	#1		45-47			46-47			46-47		
						FBN			FBN		
3639	#2			46-48			45-48			45-48	
				FBN			FBN			FBN	
3496	#3	43-46			45-48			45-46			44-47
		BC			FBN			FBN			FBN
3391	#4		45-49						43-45		
			MA, D						NIM		
2715	#5			57-60			56-61			47-53	
				MA			MA, D, P			MBA	
3669	#6	48-49			47-49			45-46			47-49
		FBN			MBA			NIM			MBA
4938	#7	EM									
4128	#8	EM									
2952	#9	EM									
Wind Speed		< 3 mph			< 3 mph			< 3 mph			< 3 mph
Wind Direction		E/SE			E/SE			SE			E

Welcome To Rockville

Sunday April 28, 2013

EQD Noise Survey

Distance	Time	1420	1440	1500	1520	1540	1600	1620	1640	1700	1720	1740
	Location											
91'	SB # 1			96-106				96-100	95-98			NR
102'	SB # 2	95-106	NR		103-108	103-108	89-106			102-109	77-80	
75'	SB # 3/4	101-105	102-104	NR	NR	105-107	103-107	101-107	103-107	102-106	103-111	NR
4283	#1	NR			NR			NR			45-46	
		KP			KP						NIM	
3639	#2		44-47			49-55						45-48
			NIM									FBN
3496	#3			45-47			NR			46-48		
				FBN						D		
3391	#4	42-45			48-50			NR			45-46	
		NM			MBA						NIM	
2715	#5		51-55			59-62				NR		51-55
			MA			MA						MA
3669	#6			45-47			NR			51-53		
				MBA						MA		
4938	#7											
4128	#8											
2952	#9											
Wind Speed				< 3 mph								< 3 mph
Wind Direction				E/SE				S/SE				SE

Welcome To Rockville

Sunday April 28, 2013

EQD Noise Survey

Distance	Time	1800	1820	1840	1900	1920	1940	1940	2000	2020	2020	2040	2100	2100	2120	2140
	Location															
91'	SB # 1	79-86	98-104	89-98	96-100							104-105	99-104	101-103	99-104	
102'	SB # 2					98-103	99-105	99-105	99-105	99-104						
75'	SB # 3/4	NR	NR	102-105	97-104	106-110	98-104	62-104	61-71							
4283	#1		45-47			45-47			46-47				45-46			
3639	#2			45-48		FBN	45-47		FBN			46-47	FBN		46-47	
3496	#3	45-48			45-49			42-44			FBN		46-47			FBN
3391	#4		45-47		FBN	46-49		FBN	45-48				FBN	45-46		
2715	#5		MBA			MBA	53-54		MBA				T			
3669	#6	45-47			48-51		MBA	45-56				47-49				
4938	#7	NM			MBA			NM					54-61			
4128	#8														55-62	
2952	#9															
Wind Speed				< 3 mph			NONE					< 3 mph			< 3 mph	
Wind Direction				E/SE								E/SE			E	

Distance	Time	2200	2220
	Location		
91'	SB # 1		
102'	SB # 2		
75'	SB # 3/4		
4283	#1		45-46
3639	#2		F
3496	#3	45-46	
3391	#4		45-47
2715	#5		NM
3669	#6	45-47	
4938	#7	NM	
4128	#8		
2952	#9	50-56	
		T	
Wind Speed			
Wind Direction			

- BC- Birds Chirping
- D- Drums
- EM- Equipment Malfunction
- F- Frogs
- FBN- Faint Band Noise
- KP- Kids Playing
- MA- Music Audible
- MBA- Music Barely Audible
- MVA- Music Very Audible
- NBN- No Band Noise
- NM- No Music
- NNR-Noise Not Related
- P- Profanity
- T- Traffic

Welcome to Rockville
 April 27 & 28, 2013
 Jacksonville, Florida
 Environmental Quality Department Noise Survey
 Summary Maximum Readings

Distance	Location	Saturday		Sunday	
		Max	dB (A)	Max	dB (A)
91'	SB #1	106		108	
102'	SB #2	108		109	
75'	SB #3/4	114		111	
4283	#1	59		47	
3639	#2	60		55	
3496	#3	57		49	
3391	#4	57		50	
2715	#5	70		62	
3669	#6	61		56	
4938	#7	67		61	
4128	#8	62		62	
2953	#9	59		56	

Welcome To Rockville

Saturday April 27, 2013

EQD Noise Survey

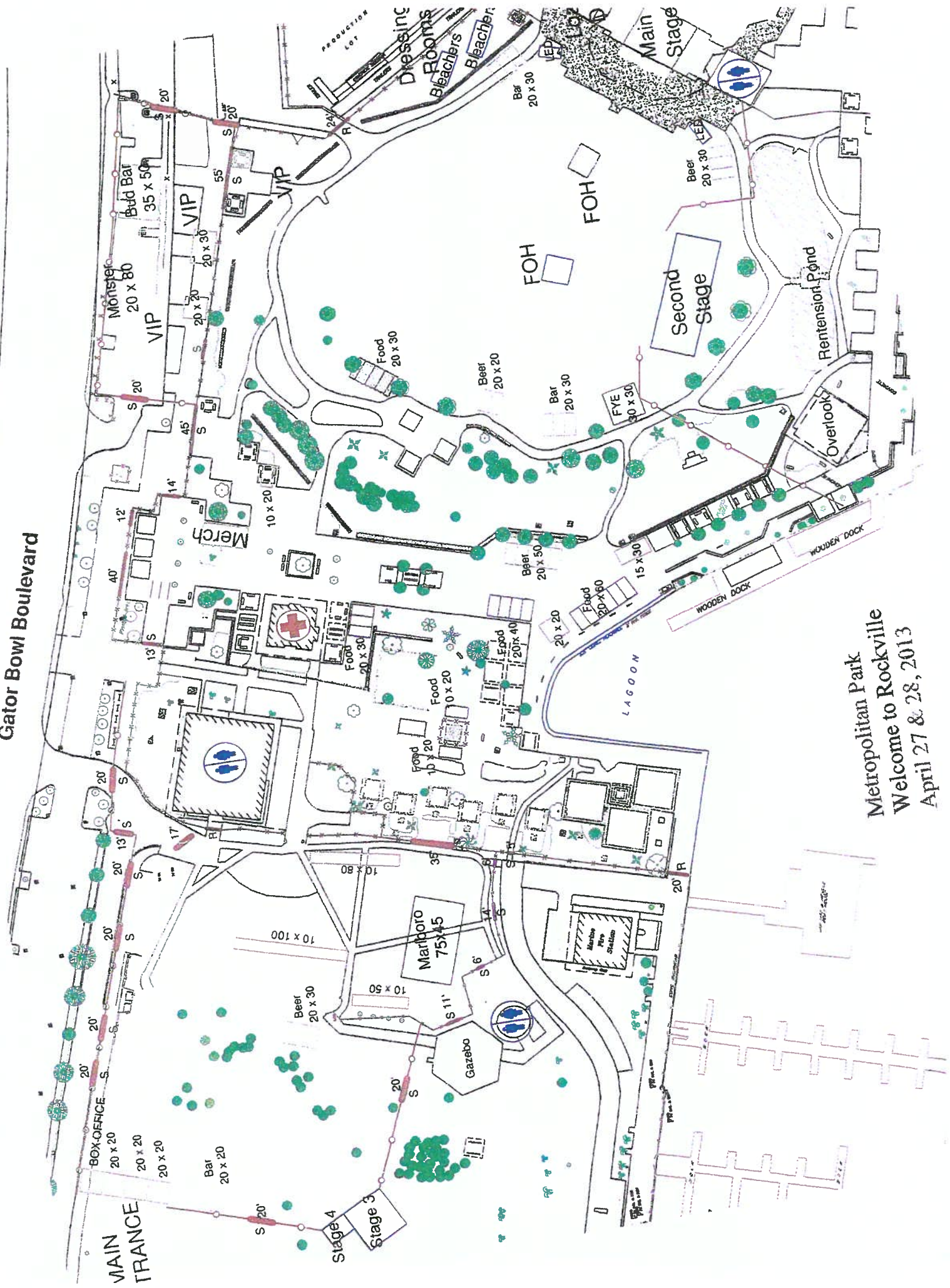
Sunday April 28, 2013

Octave Band Reading & Sound Board Levels

Rule Limit C to B	Freq.	Sat. 4/27 12:55 pm	Sat. 4/27 2:55 pm	Sat. 4/27 3:55 pm	Sat. 4/27 6:55 pm	Sun. 4/28 5:30 pm	Sun. 4/28 7:30 pm
75	31.5	78.3	76.9	73.7	76.8	78.4	74.8
74	63	76.4	89.7	75.8	87.1	84.8	86.2
67	125	68.7	74.2	70.5	74.7	72.4	71.8
63	250	57.7	63.6	61.2	56.4	53.7	51.4
56	500	53.4	51.1	52.4	54.7	51.3	49.7
51	1000	47.9	46.4	48	49.8	43.3	45.1
47	2000	40.4	46.4	42.4	42.2	37.4	36.8
45	4000	35.3	37.2	31.7	33.5	30.5	30.1
40	8000		34.7		28.7	24.0	23.3
SB # 1 dB (A)		84-97	93-96	98-101		NR	
SB # 2 dB (A)			100-104	100-103	96-99		99-105
SB # 3/4 dB (A)					98-104		98-104

Above readings were taken at: Site 5 - East of 1016 Holmesdale Rd.

Gator Bowl Boulevard



Metropolitan Park
Welcome to Rockville
April 27 & 28, 2013