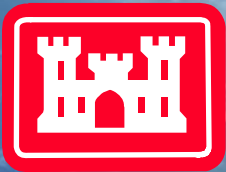


JACKSONVILLE HARBOR (MILE POINT) NAVIGATION STUDY

Duval County, Florida

Feasibility Report and
Environmental Assessment

Jacksonville Waterways Commission
October 12, 2011



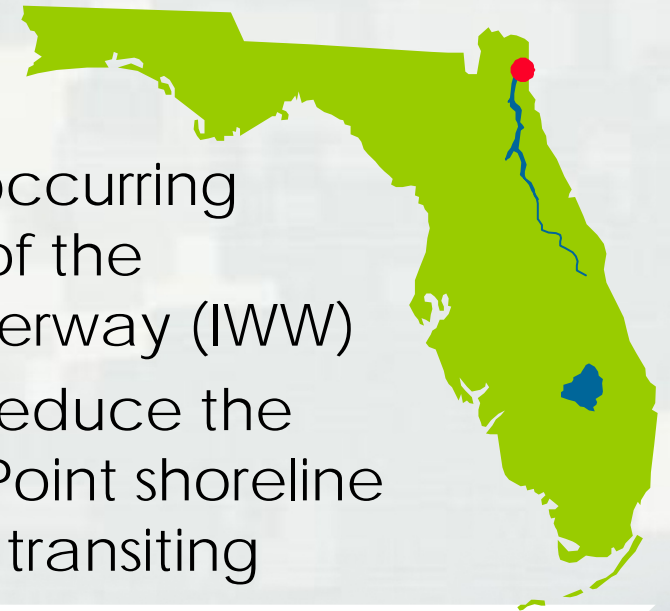
BUILDING STRONG®

US ARMY CORPS OF ENGINEERS | Jacksonville District



Study Purpose

- Eliminate or alleviate the crosscurrents occurring during the ebb flow at the confluence of the St. Johns River with the Intracoastal Waterway (IWW)
- Develop/evaluate alternative plans to reduce the effects of the crosscurrents on the Mile Point shoreline and restrictions to navigation for vessels transiting Jacksonville Harbor



~ 5000 feet of shoreline along
the north shore of the
St. Johns River, east
of the IWW

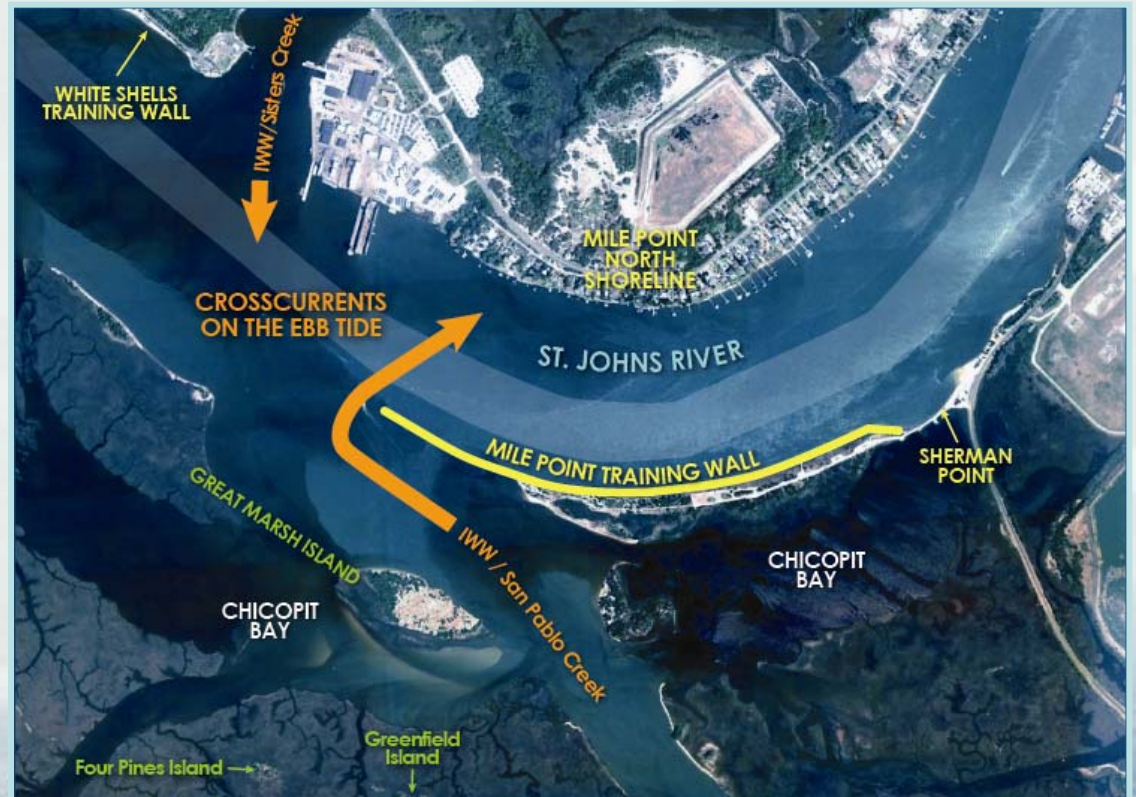


MILEPOINT

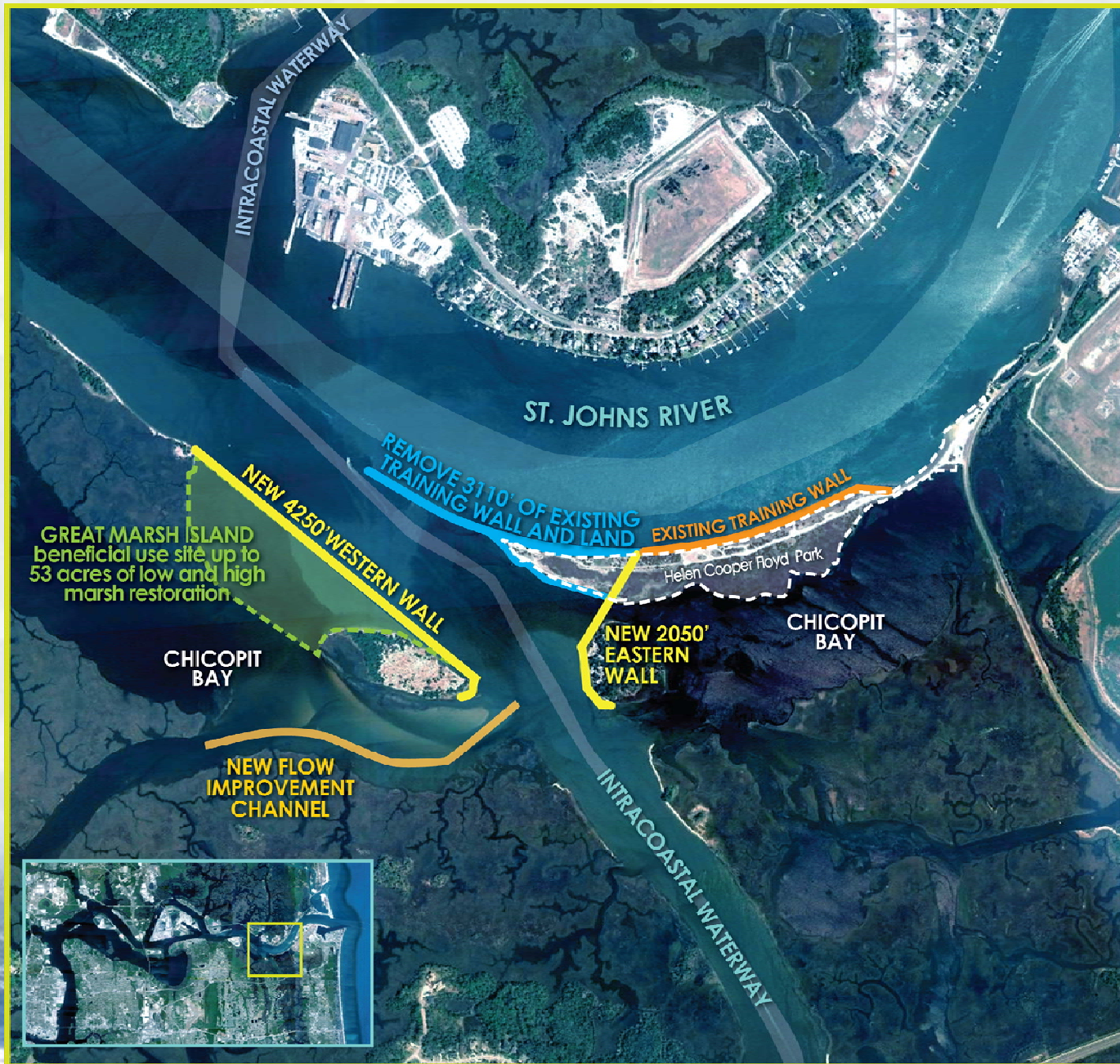


Mile Point Problems/Opportunities

- Difficult crosscurrents at the confluence of the IWW and the St. Johns River during the ebb tide result in:
 - Navigation Restrictions during the ebb tide on vessels transiting with a draft >33 feet or 34 feet depending upon the vessel type
 - Concerns about how the crosscurrents impact the Mile Point shoreline



Relocation/ Reconfiguration of the Mile Point Training Wall



- Existing Training Wall
- Training Wall Removal
- New Training Wall
- Great Marsh Island Restoration
- Flow Improvement Channel

Project Implementation

- Key Dates:
 - July 2011: Public Coordination of Draft Report
 - October 2011: Division Engineer Transmittal Letter, Initiate Design
 - March 2012: Chief of Engineer's Report
 - 2013: Begin Construction - Pending Authorization and Appropriations
- Construction Duration: 465 Days*
 - 375 days: Construction of Relocated Training Wall (Phase I)
 - 90 days: Great Marsh Island Final Grading (Phase II)

*Does not include 365 day material consolidation period between completion of Phase I and Phase II